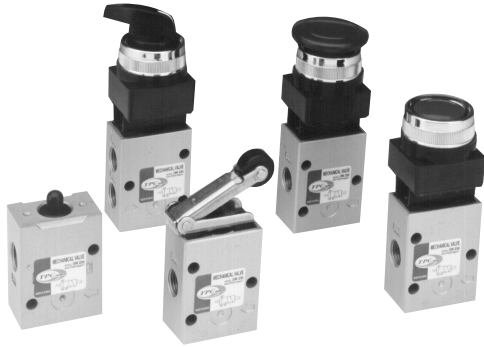


DM 시리즈

3.5포트 메카니컬 밸브



- 고강도
- 풍부한 옵션대응
- 모델변경 용이
- 뛰어난 내구성

사 양				
시리즈	DM230	DM330	DM450	DM550
사용유체	공기, 불활성가스			
사용압력	0~7kgf/cm ² (직동형)		1.5~7kgf/cm ² (파일럿형)	
유효단면적mm ² (Cv)	11.0(0.6)	19.0(1.0)	14.0(0.7)	19.0(1.0)
급 유	불필요(단, 급유시 ISO VG 32사용)			
접속구경	Rc(PT) 1/8	Rc(PT) 1/4	Rc(PT) 1/8	Rc(PT) 1/4
중 량	88	125	163	191
조작기구	롤러형/롤러베어링형/비상버튼형/푸쉬버튼형/셀렉터형			
표시기호				

주문형식

DM 2 30 ○ — 01 B — ○

1 2 3 4 5 6 7

1 MECHANICAL VALVE

2 BODY TYPE

- 2 : B Type
- 3 : C Type
- 4 : D Type
- 5 : E Type

※ 하단그림 참조

3 TYPE OF ACTUATION

- 30 : 2 Position 3 Port N.O/N.C. 공용
- 50 : 2 Position 5 Port

4 부착금구

- 무기호:없음
- B : Bracket

5 포트사이즈

- 01:1/8
- 02:1/4

6 조작기구

- B : 기본형
- R : 롤러형
- RB : 롤러 베어링형

R2 : 일방향 롤러형

R2B : 일방향롤러 베어링형

E : 비상버튼형

P : 푸쉬버튼형

S : 셀렉터형

7 스위치 색상

무기호 : Red(셀렉터 형은 Black 기본형, 다른색상 없음)

G : Green

B : Black

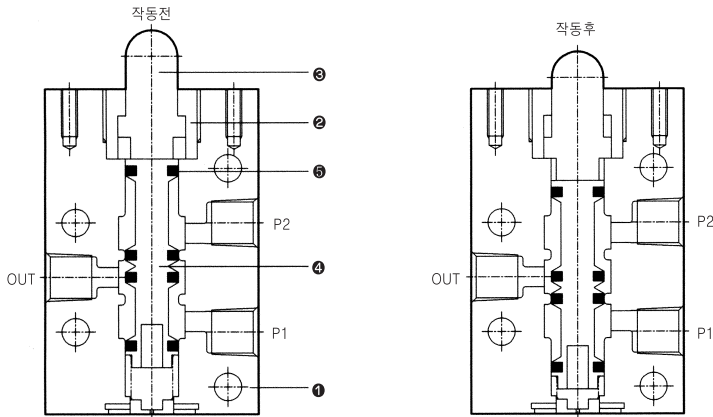
BRACKET 품번 (별도주문시)

DM450용:DM-4B

※ DM230, 330 series는 금구 없음

B TYPE	C TYPE	D TYPE	E TYPE

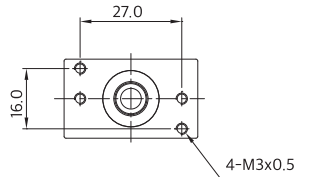
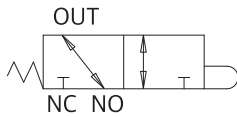
DM230구조도/부품 LIST



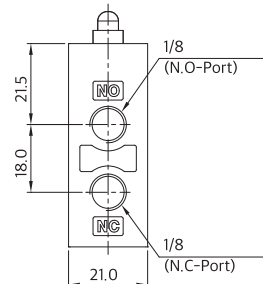
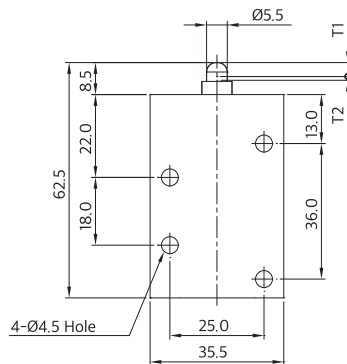
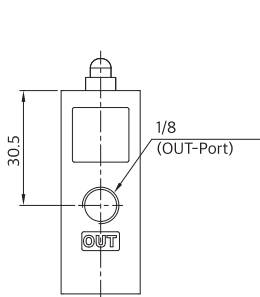
품번	품명	재질
①	Body	A & DC
②	Housing	동
③	Button	수지
④	Spool	A &
⑤	Spool Packing	NBR

DM230-01B(기본형)

3포트 메카니컬 밸브



동작 사양		
T ₁	유효 동작 거리	3.5 mm
T ₂	무효 동작 거리	1.0 mm
F ₁	유효 조작에 필요한 하중	3.5 Kg
F ₂	무효 조작에 필요한 하중	



TV2

TV2WFI

TV2WC

FSW

DR100
DR200

RS1000
RS2000

RS4000
RS4R

SI UNIT

RDV100
RDV300
RDV400

DVC1000

DV1000
DV3000
DV4000

DVUM1000
DVUM3000
DVUM4000

DVP1000
DVP3000
DVP4000

RDS300
RDS3000
RDS5000

RDSN3000

DS2000
DS6000

DX1
DX2

DX1R
DX2R

TVH

TFVM

DP300
DP3000
DP5000

DM

DT220

DQE

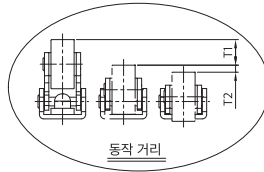
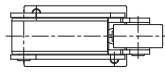
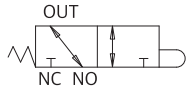
DCV

TX350

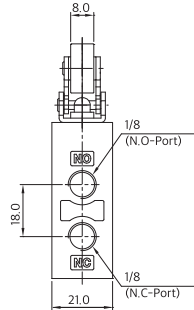
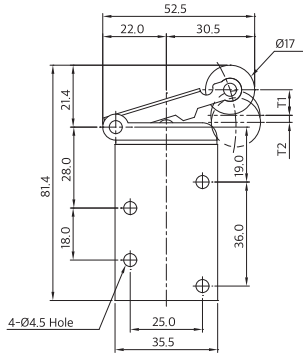
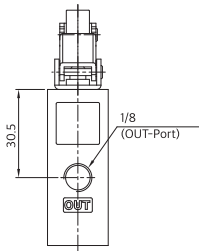
DM 시리즈

DM230-01R(롤러형) / DM230-01RB(롤러 베어링형)

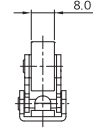
3포트 매카니컬 밸브



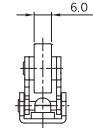
동작 사양		
T ₁	유효 동작 거리	8.5mm
T ₂	무효 동작 거리	2.0mm
F ₁	유효 조작에 필요한 하중	1.5 Kg
F ₂	무효 조작에 필요한 하중	



DM230-01R (양방향 롤러)

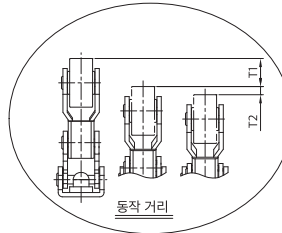
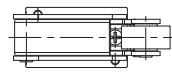
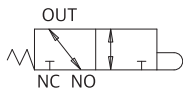


DM230-01RB (양방향 롤러 베어링)

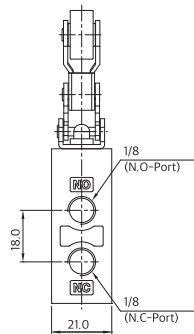
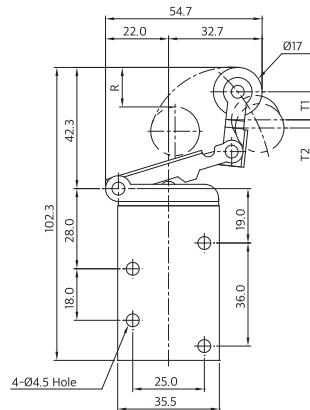
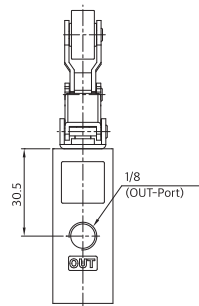


DM230-01R2(일방향 롤러형) / DM230-01RB(일방향 롤러 베어링형)

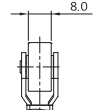
3포트 매카니컬 밸브



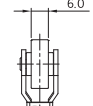
동작 사양		
T ₁	유효 동작 거리	9.5mm
T ₂	무효 동작 거리	3.0mm
F ₁	유효 조작에 필요한 하중	2.5 Kg
F ₂	무효 조작에 필요한 하중	
R	복귀시 최대 설정 거리	13.5mm 이하



DM230-01R2 (한방향 롤러)



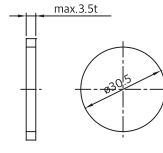
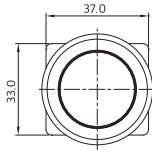
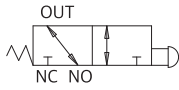
DM230-01RB2 (한방향 롤러 베어링)



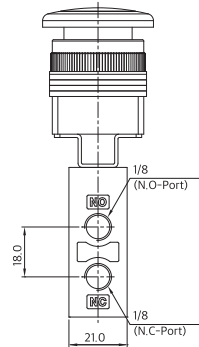
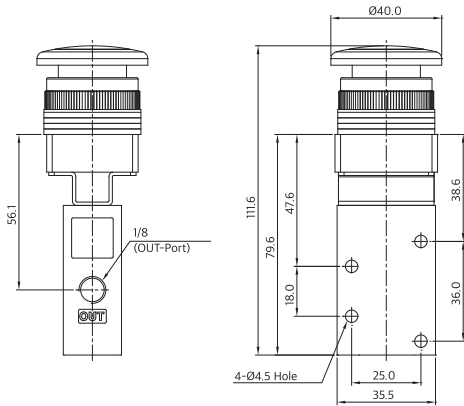
3-포트 메카니컬 밸브 DM 시리즈

DM230-01E(비상버튼형)

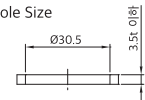
3포트 메카니컬 밸브



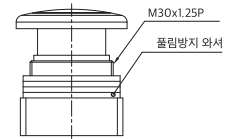
Pannel Hole Size



Pannel Hole Size



DM230-01E [비상버튼]



※Button Color: [표준] -R : RED

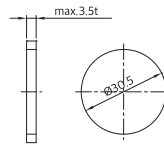
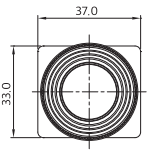
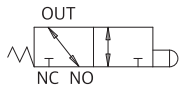
-B : BLACK

-G : GREEN

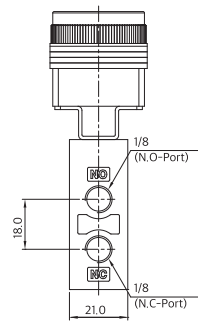
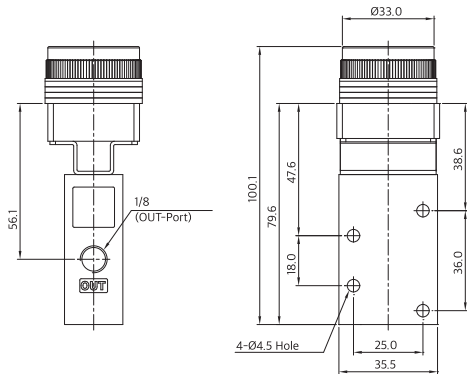
동작 사양		
F ₁	유효 조작에 필요한 하중	2.5 Kg
F ₂	무효 조작에 필요한 하중	

DM230-01P(푸시버튼형)

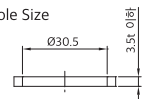
3포트 메카니컬 밸브



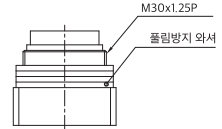
Pannel Hole Size



Pannel Hole Size



DM230-01P [누름버튼]



※Button Color: [표준] -R : RED

-B : BLACK

-G : GREEN

동작 사양		
F ₁	유효 조작에 필요한 하중	2.5 Kg
F ₂	무효 조작에 필요한 하중	

TV2

TV2WFI

TV2WC

FSW

DR100
DR200

RS1000
RS2000

RS4000
RS4R

SI UNIT

RDV100
RDV300
RDV400

DVC1000

DV1000
DV3000
DV4000

DVUM1000
DVUM3000
DVUM4000

DVP1000
DVP3000
DVP4000

RDS300
RDS3000
RDS5000

RDSN3000

DS2000
DS6000

DX1
DX2

DX1R
DX2R

TVH

TFVM

DP300
DP3000
DP5000

DM

DT220

DQE

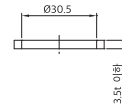
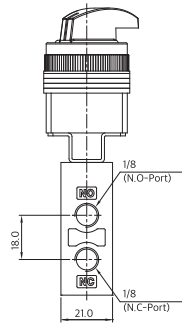
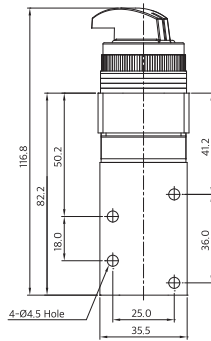
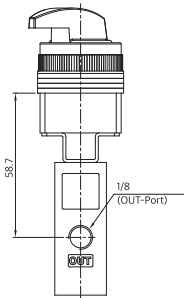
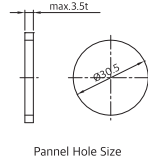
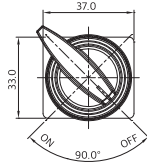
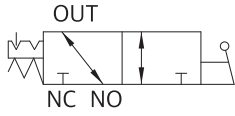
DCV

TX350

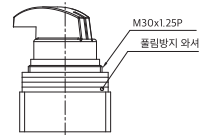
DM 시리즈

DM230-01S(셀렉터형)

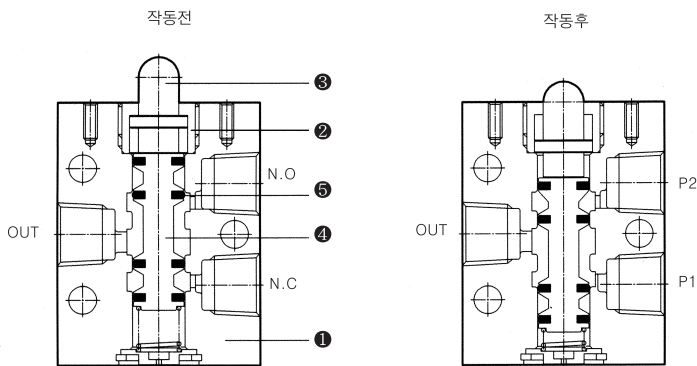
3포트 매카니컬 밸브



DM230-01S [2위치 셀렉터]



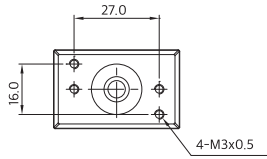
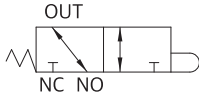
DM330 / 구조도 / 부품 List



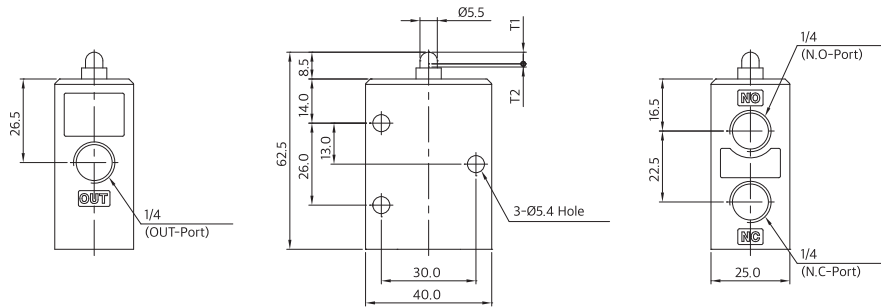
품번	품명	재질
①	Body	A 1 DC
②	Housing	C3604
③	Button	POM
④	Spool	A2011
⑤	Spool Packing	NBR

DM330-02B(기본형)

3포트 메카니컬 밸브

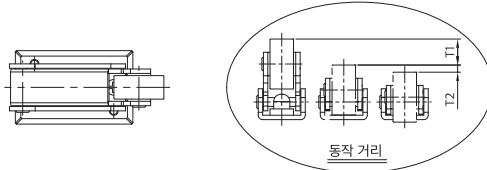
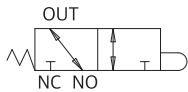


동작 사양		
T ₁	유효 동작 거리	3.5 mm
T ₂	무효 동작 거리	1.0 mm
F ₁	유효 조작에 필요한 하중	3.5 Kg
F ₂	무효 조작에 필요한 하중	

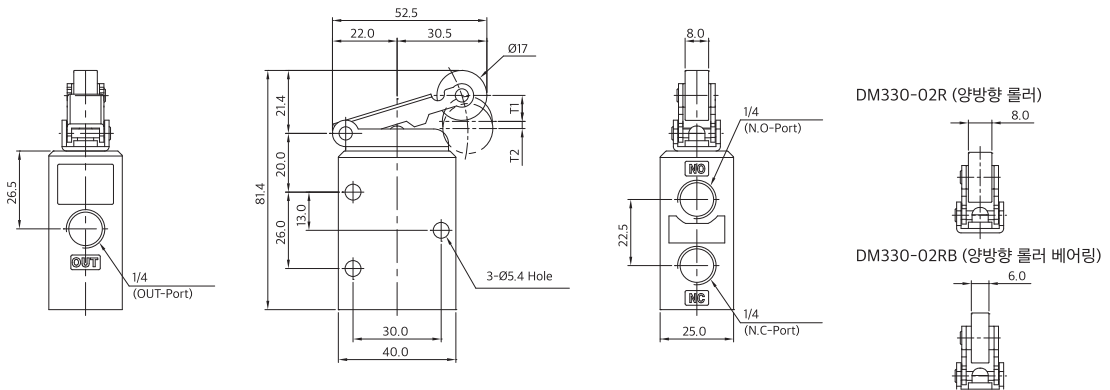


DM330-02R(롤러형) / DM330-02RB(롤러 베어링형)

3포트 메카니컬 밸브



동작 사양		
T ₁	유효 동작 거리	8.5 mm
T ₂	무효 동작 거리	2.0 mm
F ₁	유효 조작에 필요한 하중	2.0 Kg
F ₂	무효 조작에 필요한 하중	



DM330-02R (양방향 롤러)

DM330-02RB (양방향 롤러 베어링)

TV2

TV2WFI

TV2WC

FSW

DR100
DR200

RS1000
RS2000

RS4000
RS4R

SI UNIT

RDV100
RDV300
RDV400

DVC1000

DV1000
DV3000
DV4000

DVUM1000
DVUM3000
DVUM4000

DVP1000
DVP3000
DVP4000

RDS300
RDS3000
RDS5000

RDSN3000

DS2000
DS6000

DX1
DX2

DX1R
DX2R

TVH

TFVM

DP300
DP3000
DP5000

DM

DT220

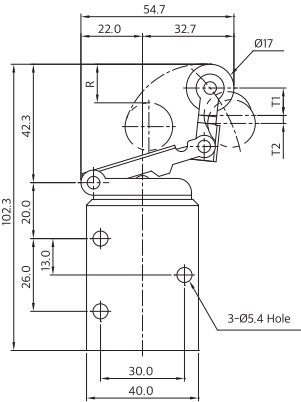
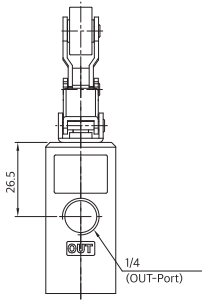
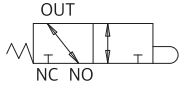
DQE

DCV

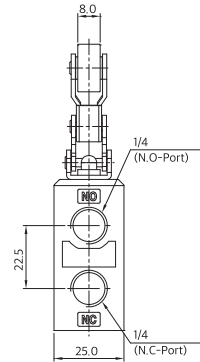
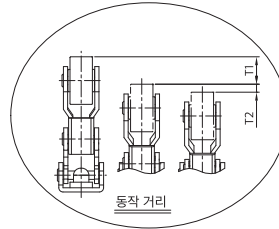
TX350

DM330-02R2(일방향 롤러형) / DM330-02R2B(일방향 롤러 베어링형)

3포트 매카니컬 밸브

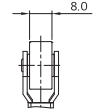


동작방향 →
무효 동작방향 ←

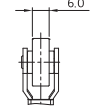


동작 사양	
T ₁	유효 동작 거리 9.5mm
T ₂	무효 동작 거리 3.0mm
F ₁	유효 조작에 필요한 하중 3.0 Kg
F ₂	무효 조작에 필요한 하중
R	복귀시 최대 설정 거리 13.5mm 이하

DM330-02R2 (한방향 롤러)

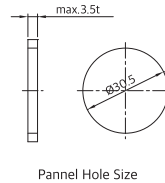
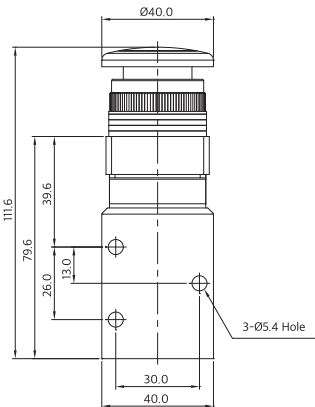
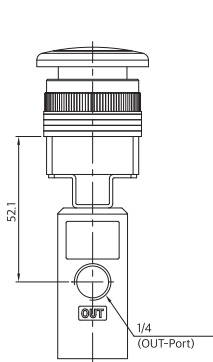
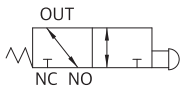


DM330-02R2B (한방향 롤러 베어링)

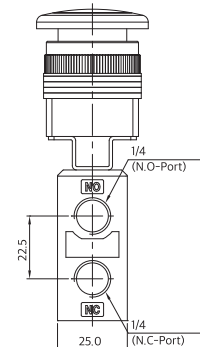


DM330-02E(비상버튼형)

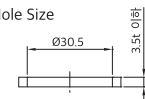
3포트 매카니컬 밸브



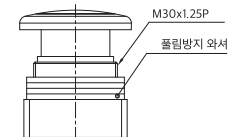
Pannel Hole Size



Pannel Hole Size



DM330-02E [비상버튼]



※Button Color:
[표준] -R : RED

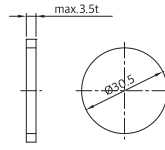
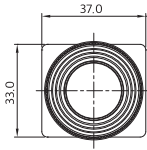
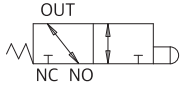
-B : BLACK

-G : GREEN

3-5포트 메카니컬 밸브 DM 시리즈

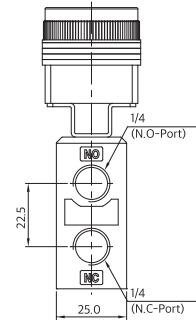
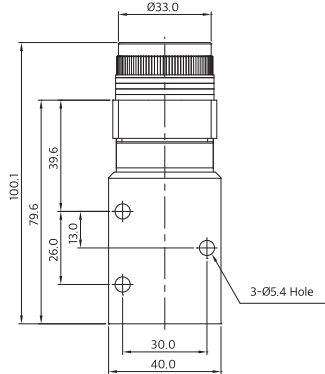
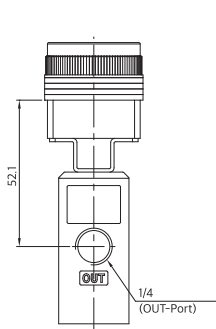
DM330-02P(푸쉬버튼형)

3포트 메카니컬 밸브

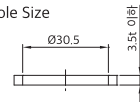


Pannel Hole Size

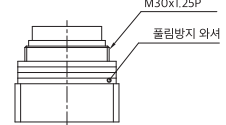
동작 사양		
F1	유효 조작에 필요한 하중	3.5 Kg
F2	무효 조작에 필요한 하중	



Pannel Hole Size



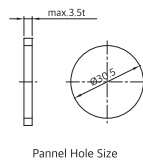
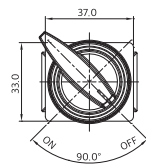
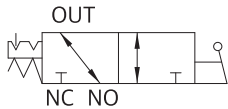
DM330-02P [누름버튼]



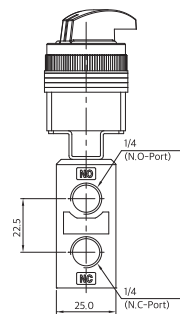
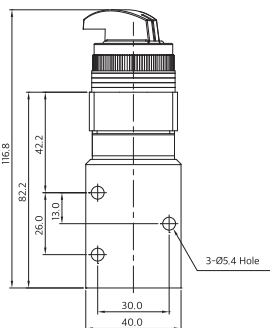
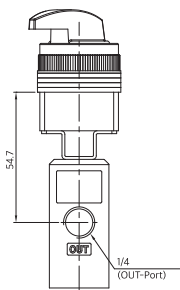
※Button Color:
[표준] -R : RED
-B : BLACK
-G : GREEN

DM330-02S(셀렉터형)

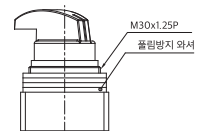
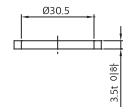
3포트 메카니컬 밸브



Pannel Hole Size



DM330-02S [2위치 셀렉터]



TV2

TV2WFI

TV2WC

FSW

DR100
DR200

RS1000
RS2000

RS4000
RS4R

SI UNIT

RDV100
RDV300
RDV400

DVC1000

DV1000
DV3000
DV4000

DVUM1000
DVUM3000
DVUM4000

DVP1000
DVP3000
DVP4000

RDS300
RDS3000
RDS5000

RDSN3000

DS2000
DS6000

DX1
DX2

DX1R
DX2R

TVH

TFVM

DP300
DP3000
DP5000

DM

DT220

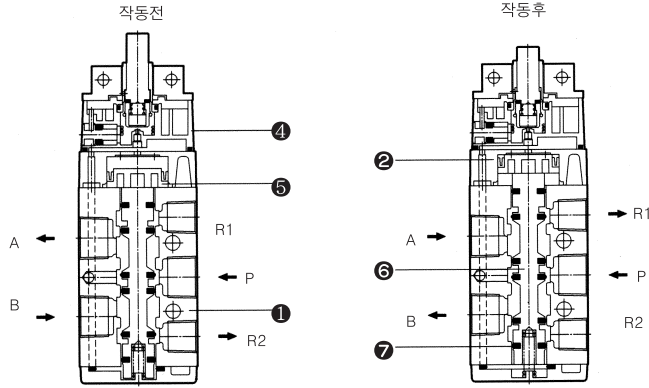
DQE

DCV

TX350

DM 시리즈

DM450 / 구조도 / 부품 List



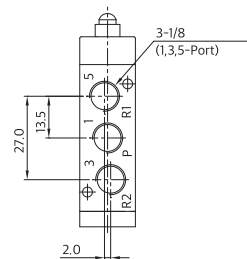
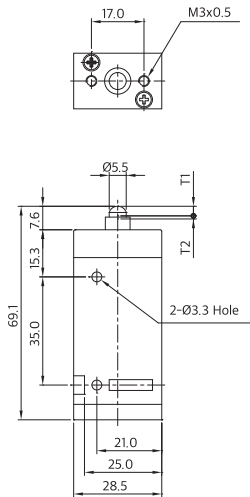
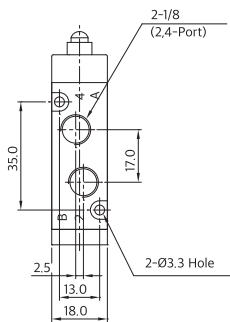
품번	품명	재질
①	Body	A ̸ DC
②	Semi Pilot	ZnDC
③	Cap	ZnDC
④	Pilot	ZnDC
⑤	Piston	PBT
⑥	Spool	A2011
⑦	Spool Packing	NBR

DM450-01B(기본형)

5포트 매카니컬 밸브

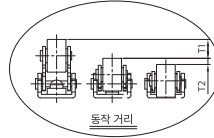
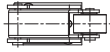


동작 사양		
T ₁	유효 동작 거리	3.0mm
T ₂	무효 동작 거리	1.0mm
F ₁	유효 조작에 필요한 하중	2.5 Kg
F ₂	무효 조작에 필요한 하중	

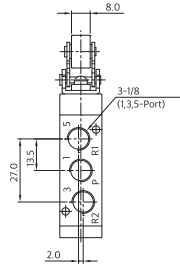
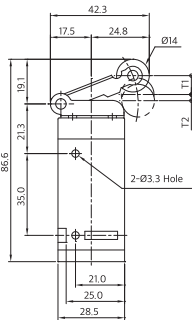
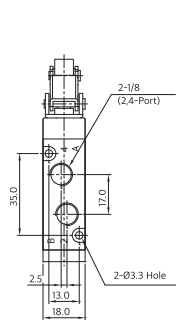


DM450-01R(롤러형) / DM450-01RB(롤러 베어링형)

5포트 메카니컬 밸브



동작 사양		
T ₁	유효 동작 거리	8.0mm
T ₂	무효 동작 거리	2.5mm
F ₁	유효 조작에 필요한 하중	1.0 Kg
F ₂	무효 조작에 필요한 하중	



DM450-01R (양방향 롤러)

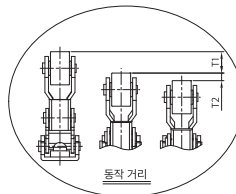
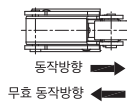


DM450-01RB (양방향 롤러 베어링)

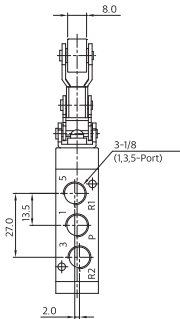
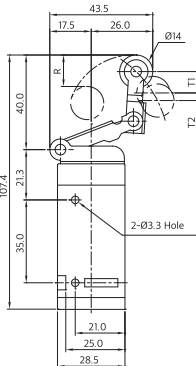
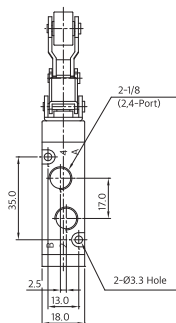


DM450-01R2(일방향 롤러형) / DM450-01R2B(일방향 롤러 베어링형)

5포트 메카니컬 밸브



동작 사양		
T ₁	유효 동작 거리	9.0mm
T ₂	무효 동작 거리	3.0mm
F ₁	유효 조작에 필요한 하중	2.0 Kg
F ₂	무효 조작에 필요한 하중	
R	복귀시 최대 설정 거리	2.0mm 이하



DM450-01R2 (한방향 롤러)



DM450-01R2B(한방향 롤러 베어링)



TV2

TV2WFI

TV2WC

FSW

DR100
DR200

RS1000
RS2000

RS4000
RS4R

SI UNIT

RDV100
RDV300
RDV400

DVC1000

DV1000
DV3000
DV4000

DVUM1000
DVUM3000
DVUM4000

DVP1000
DVP3000
DVP4000

RDS300
RDS3000
RDS5000

RDSN3000

DS2000
DS6000

DX1
DX2

DX1R
DX2R

TVH

TFVM

DP300
DP3000
DP5000

DM

DT220

DQE

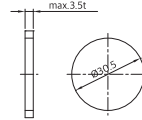
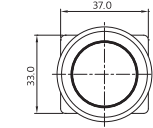
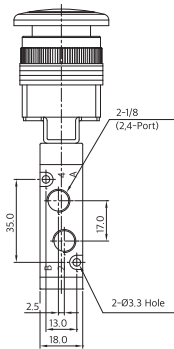
DCV

TX350

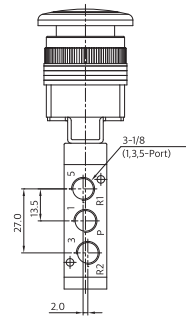
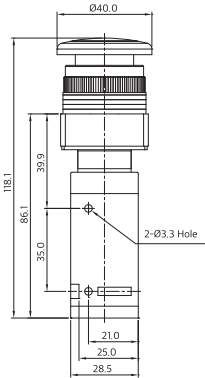
DM 시리즈

DM450-01E(비상버튼형)

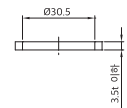
5포트 메카니컬 밸브



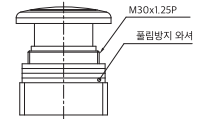
Pannel Hole Size



Pannel Hole Size



DM450-01E [비상버튼]



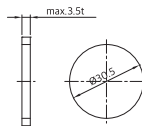
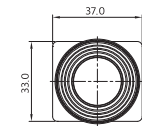
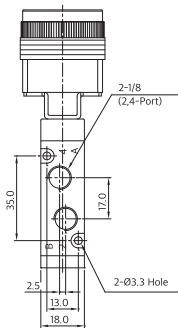
※Button Color:
[표준] -R : RED

-B : BLACK

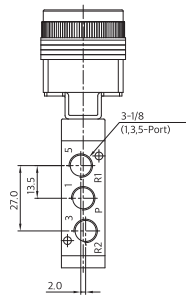
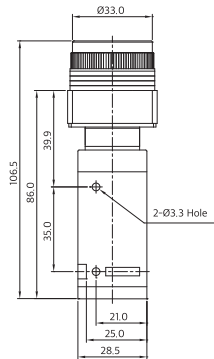
-G : GREEN

DM450-01P(푸쉬버튼형)

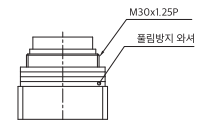
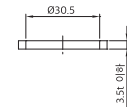
5포트 메카니컬 밸브



Pannel Hole Size



Pannel Hole Size



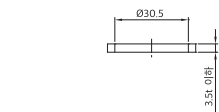
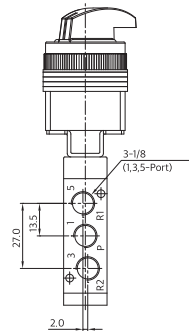
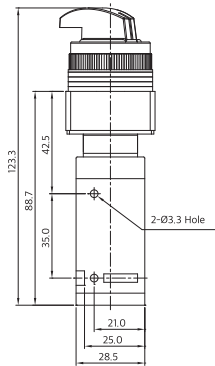
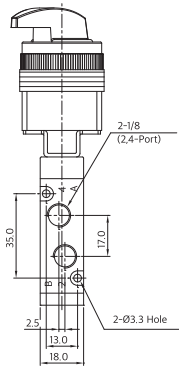
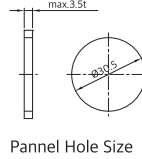
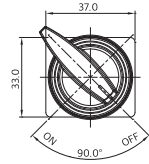
※Button Color:
[표준] -R : RED

-B : BLACK

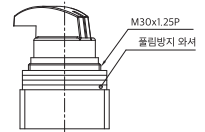
-G : GREEN

DM450-01S(셀렉터형)

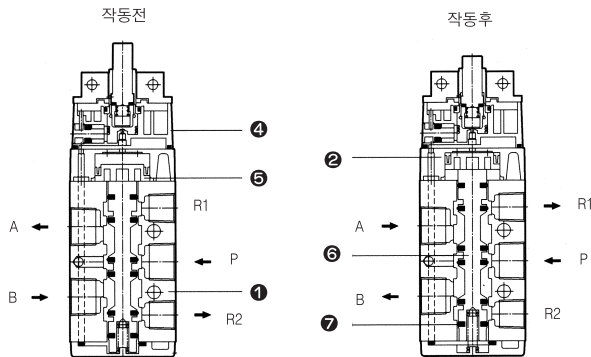
5포트 메카니컬 밸브



DM450-01S [2위치 셀렉터]



DM550 / 구조도 / 부품 List



품번	품명	재질
①	Body	A 2 DC
②	Semi Pilot	ZnDC
③	Cap	ZnDC
④	Pilot	PBT
⑤	Piston	POM
⑥	Spool	A2011
⑦	Spool Packing	NBR

TV2

TV2WFI

TV2WC

FSW

DR100
DR200

RS1000
RS2000

RS4000
RS4R

SI UNIT

RDV100
RDV300
RDV400

DVC1000

DV1000
DV3000
DV4000

DVUM1000
DVUM3000
DVUM4000

DVP1000
DVP3000
DVP4000

RDS300
RDS3000
RDS5000

RDSN3000

DS2000
DS6000

DX1
DX2

DX1R
DX2R

TVH

TFVM

DP300
DP3000
DP5000

DM

DT220

DQE

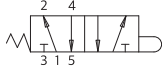
DCV

TX350

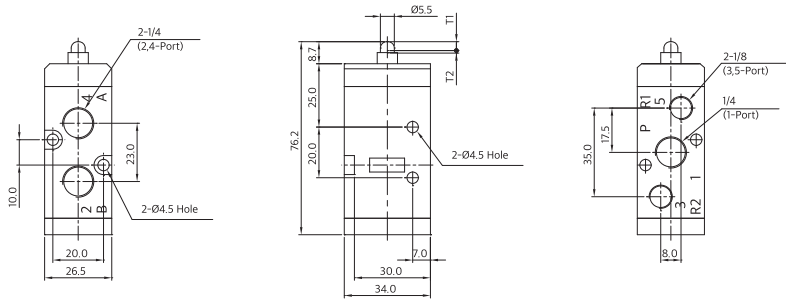
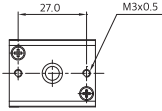
DM 시리즈

DM550-02B(기본형)

5포트 메카니컬 밸브

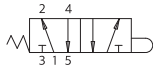


동작 사양		
T ₁	유효 동작 거리	3.5 mm
T ₂	무효 동작 거리	1.0 mm
F ₁	유효 조작에 필요한 하중	3.8 Kg
F ₂	무효 조작에 필요한 하중	

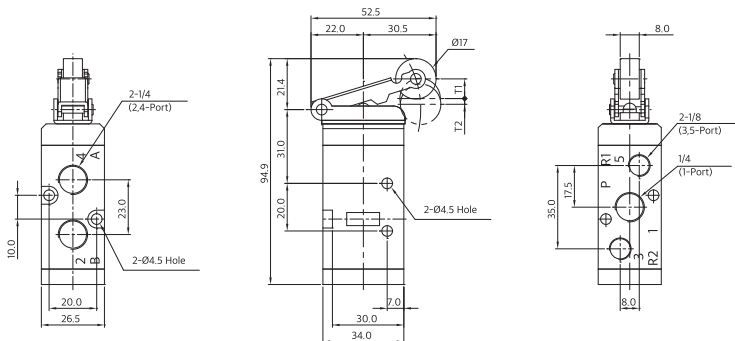
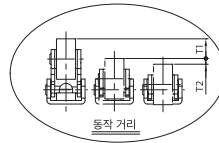
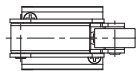


DM550-02R(롤러형) / DM550-02RB(롤러 베어링형)

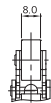
5포트 메카니컬 밸브



동작 사양		
T ₁	유효 동작 거리	8.0 mm
T ₂	무효 동작 거리	2.0 mm
F ₁	유효 조작에 필요한 하중	2.0 Kg
F ₂	무효 조작에 필요한 하중	



DM550-02R (양방향 롤러)



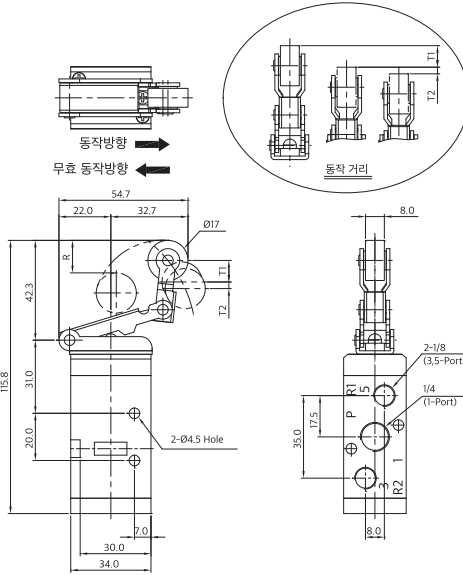
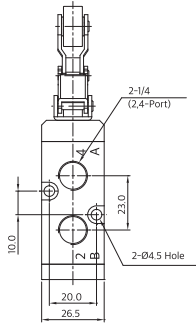
DM550-02RB (양방향 롤러 베어링)



3-5포트 메카니컬 밸브 DM 시리즈

DM550-02R2(일방향 롤러형) / DM550-02R2B(일방향 롤러 베어링형)

5포트 메카니컬 밸브



동작 사양		
T ₁	유효 동작 거리	9.0mm
T ₂	무효 동작 거리	2.5mm
F ₁	유효 조작에 필요한 하중	3.0Kg
F ₂	무효 조작에 필요한 하중	3.0Kg
R	복귀시 최대 설정 거리	13.5mm 이하

DM550-02R2 (한방향 롤러)

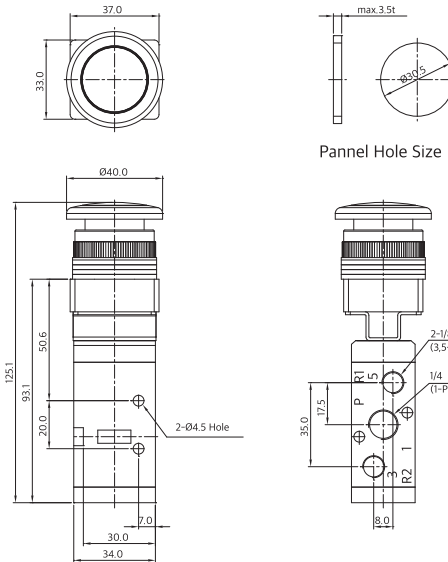
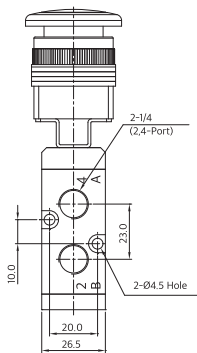


DM550-02R2B (한방향 롤러 베어링)



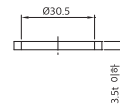
DM550-02E(비상버튼형)

5포트 메카니컬 밸브

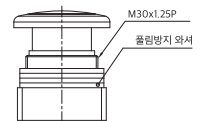


동작 사양		
F ₁	유효 조작에 필요한 하중	2.5Kg
F ₂	무효 조작에 필요한 하중	2.5Kg

Pannel Hole Size



DM550-02E [비상버튼]



※Button Color:
[표준] -R : RED
-B : BLACK
-G : GREEN

TV2

TV2WFI

TV2WC

FSW

DR100
DR200

RS1000
RS2000

RS4000
RS4R

SI UNIT

RDV100
RDV300
RDV400

DVC1000

DV1000
DV3000
DV4000

DVUM1000
DVUM3000
DVUM4000

DVP1000
DVP3000
DVP4000

RDS300
RDS3000
RDS5000

RDSN3000

DS2000
DS6000

DX1
DX2

DX1R
DX2R

TVH

TFVM

DP300
DP3000
DP5000

DM

DT220

DQE

DCV

TX350

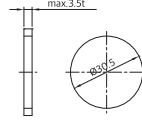
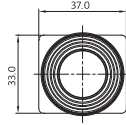
DM 시리즈

DM550-02P(푸쉬버튼형)

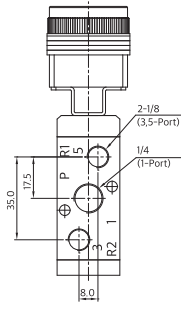
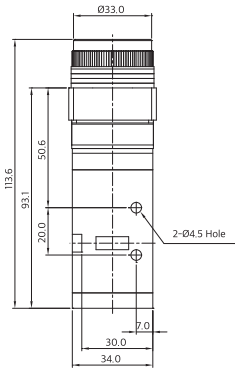
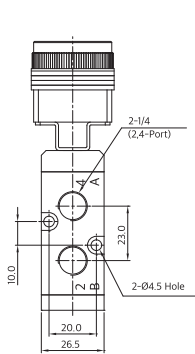
5포트 메카니컬 밸브



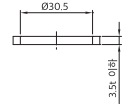
동작 사양		
F ₁	유효 조작에 필요한 하중	2.5 Kg
F ₂	무효 조작에 필요한 하중	



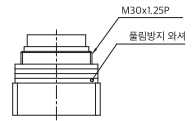
Pannel Hole Size



Pannel Hole Size



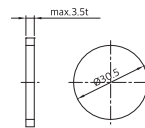
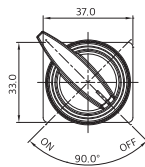
DM550-02P [누름버튼]



※Button Color:
[표준] -R : RED
-B : BLACK
-G : GREEN

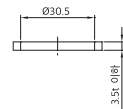
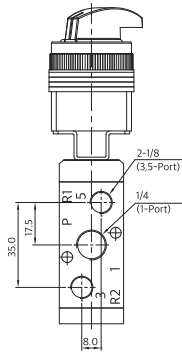
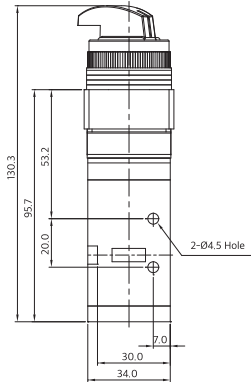
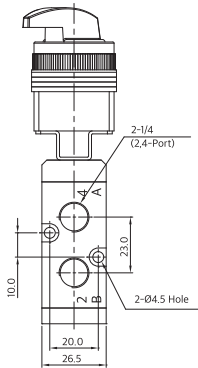
DM550-02S(셀렉터형)

5포트 메카니컬 밸브



Pannel Hole Size

Pannel Hole Size



DM550-02S [2위치 셀렉터]

