

# 표준 패드 PFG 시리즈

## 주문형식

PFG - 2A - N

패드지름

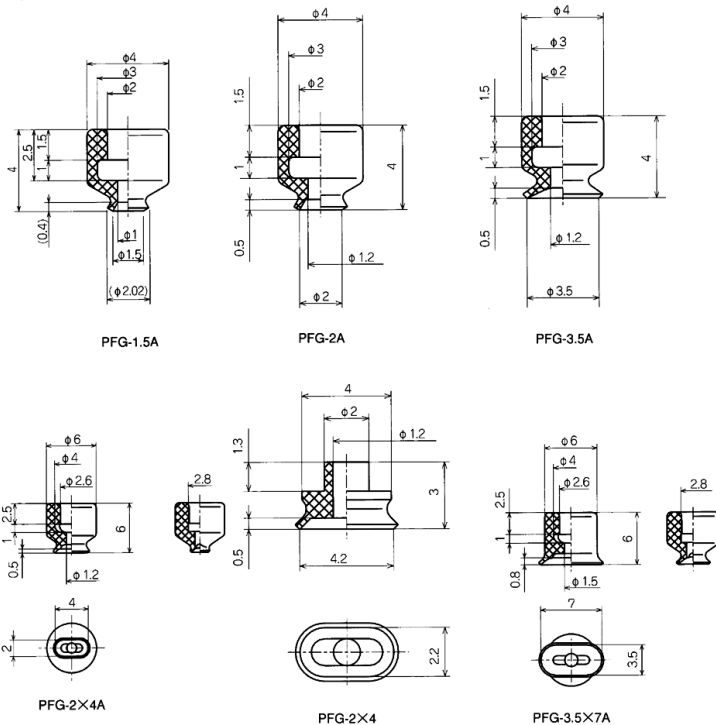
|        |     |
|--------|-----|
| 1.5A   | 20B |
| 2A     | 20  |
| 2×4A   | 25  |
| 2X4    | 30  |
| 3.5A   | 35  |
| 3.5X7A | 40  |
| 3.5X7  | 50  |
| 5A     | 60  |
| 6A     | 80  |
| 8A     | 95  |
| 10A    | 120 |
| 15A    | 150 |
| 15     | 200 |

고무재질 및 경도(Hs)

|    |                         |
|----|-------------------------|
| N  | 니트릴 55° (흑색)            |
| S  | 실리콘 55° (백색)            |
| U  | 우레탄 55° (청색)            |
| F  | 플루오린 70° (백색마크부착 흑색)    |
| NE | 도전성 니트릴 70° (청색마크부착 흑색) |
| SE | 도전성 실리콘 55° (적색마크부착 흑색) |

## 외형치수도

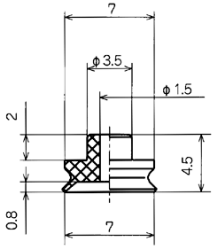
(단위 : mm)



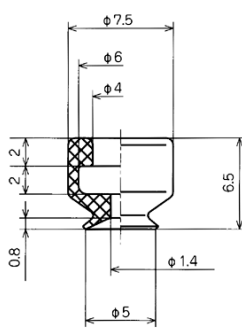
# 표준패드 / PFG 시리즈

## 외형치수도

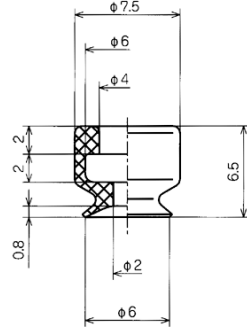
(단위 : mm)



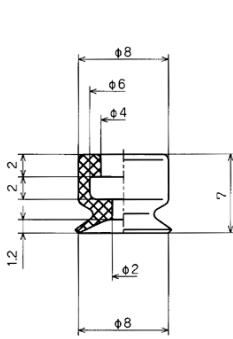
PFG-3.5X7



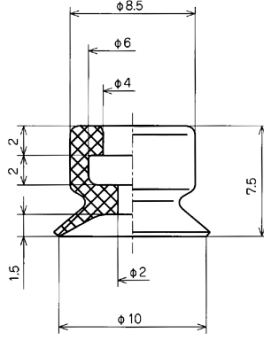
PFG-5A



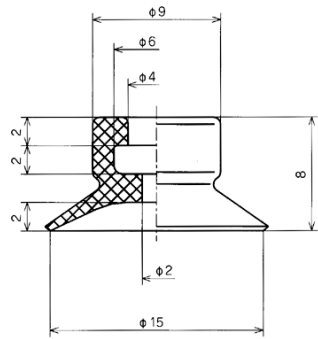
PFG-6A



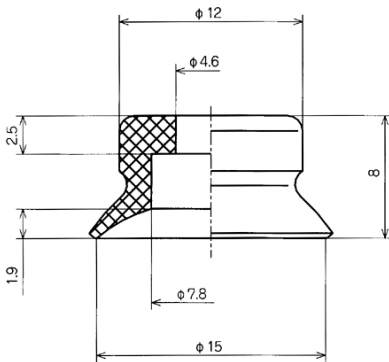
PFG-8A



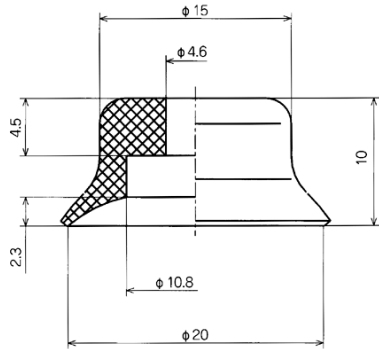
PFG-10A



PFG-15A



PFG-15

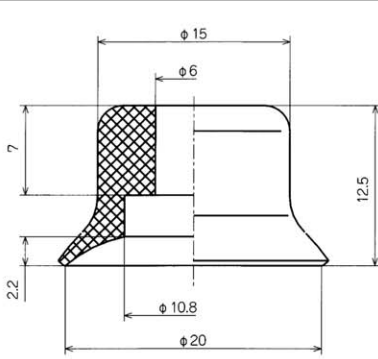


PFG-20

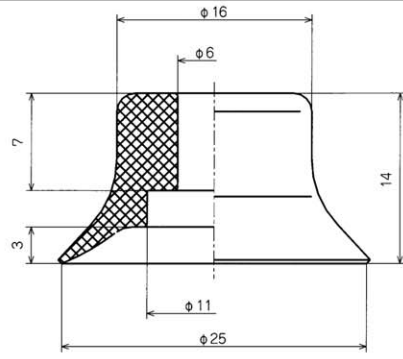
# 표준패드 / PFG 시리즈

외형치수도

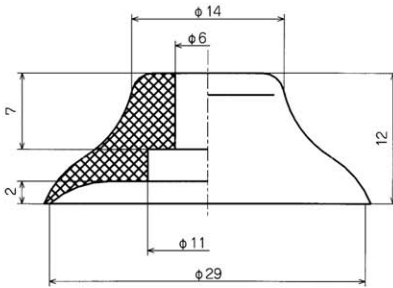
(단위 : mm)



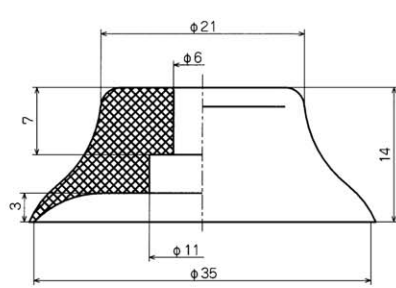
PFG-20B



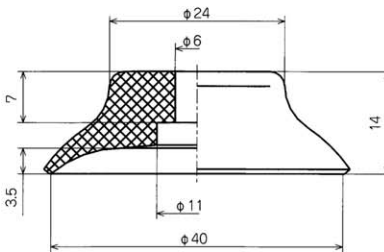
PFG-25



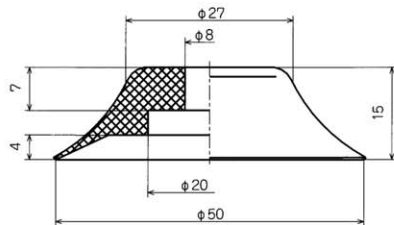
PFG-30



PFG-35



PFG-40

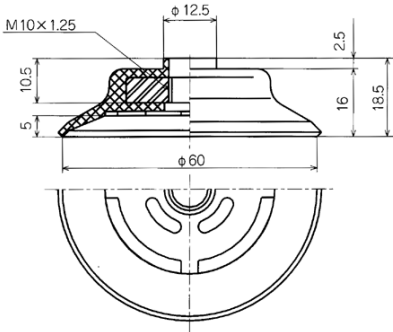


PFG-50

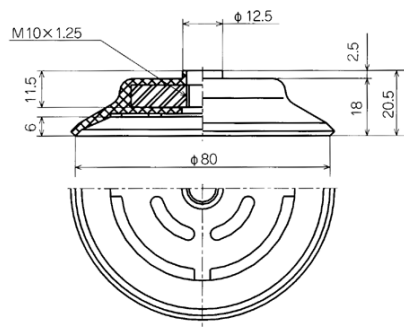
# 표준패드 / PFG 시리즈

## 외형치수도

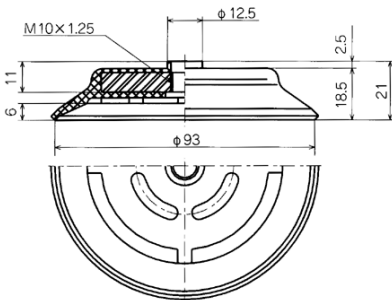
(단위 : mm)



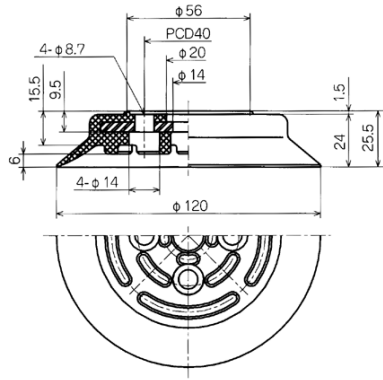
PFG-60



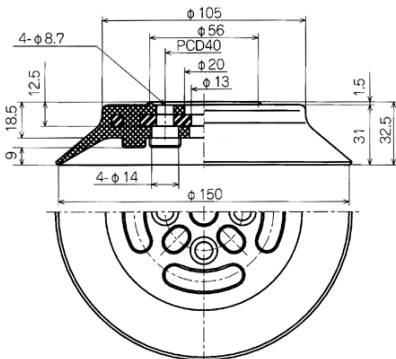
PFG-80



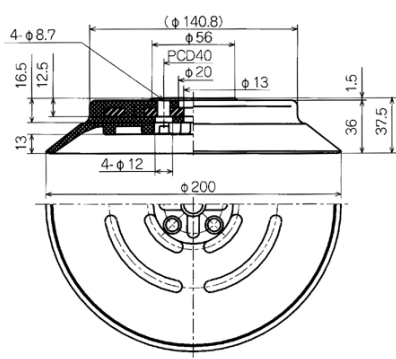
PFG-95



PFG-120



PFG-150



PFG-200

# 표준 패드 / 고정식 금구 부착형 PFTK / PFYK 시리즈

## 주문형식

PF T K - 2A - N

진공취출 방향

|   |     |
|---|-----|
| T | 중방향 |
| Y | 횡방향 |

패드지름

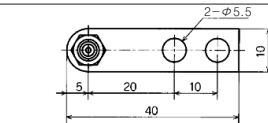
|       |     |
|-------|-----|
| 1.5A  | 30  |
| 2A    | 35  |
| 3.5A  | 40  |
| 2X4   | 50  |
| 3.5X7 | 60  |
| 5A    | 80  |
| 6A    | 95  |
| 8A    | 100 |
| 10A   | 120 |
| 15    | 150 |
| 20    | 200 |
| 25    |     |

고무재질 및 경도(Hs)

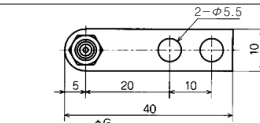
|    |                         |
|----|-------------------------|
| N  | 니트릴 55° (흑색)            |
| S  | 실리콘 55° (백색)            |
| U  | 우레탄 55° (청색)            |
| F  | 플루오린 70° (백색마크부착 흑색)    |
| NE | 도전성 니트릴 70° (청색마크부착 흑색) |
| SE | 도전성 실리콘 55° (적색마크부착 흑색) |
| K  | 금구 세트 (PFG, 고정나사 제외)    |

## 외형치수도

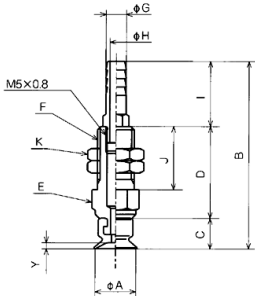
( X® a



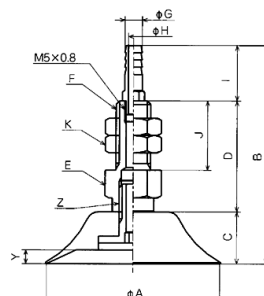
PFTK-1.5A/2A/3.5A



PFTK-2X4/3.5X7

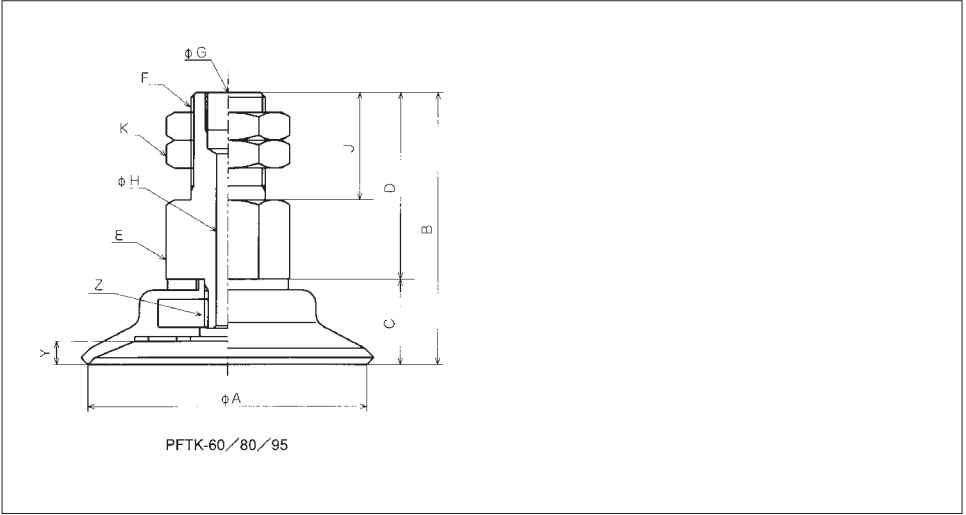


PFTK-5A/6A/8A/10A



PFTK-15/20/25/30/35/40/50

# 표준패드 / 고정식 금구 부착형 / PFTK / PFYK 시리즈



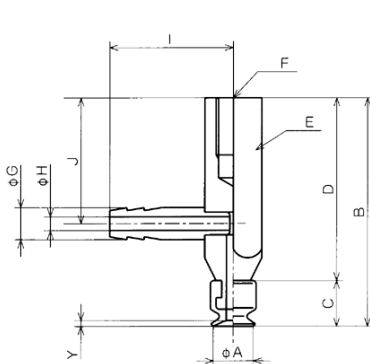
(단위 : mm)

| 품명         | A     | B    | C    | D    | E   | F       | G     | H   | I   | J    | K   | Y   | Z        | 질량(g) |
|------------|-------|------|------|------|-----|---------|-------|-----|-----|------|-----|-----|----------|-------|
| PFTK-1.5A  | 3.5   | 23.5 | 4    | 3    |     | M5×0.5  | 2.8   | 1.2 | 8.5 | 8    | 7H  | 0.4 |          | 8     |
| PFTK-2A    | 2     | 23.5 | 4    | 3    |     | M5×0.5  | 2.8   | 1.2 | 8.5 | 8    | 7H  | 0.5 |          | 8     |
| PFTK-2×4   | 2×4   | 24.7 | 1.7  | 6.5  |     | M5×0.5  | 2.8   | 1.2 | 8.5 | 8    | 7H  | 0.5 |          | 8     |
| PFTK-3.5A  | 3.5   | 23.5 | 4    | 3    |     | M5×0.5  | 2.8   | 1.2 | 8.5 | 8    | 7H  | 0.5 |          | 8     |
| PFTK-3.5×7 | 3.5×7 | 25.5 | 2.5  | 6.5  |     | M5×0.5  | 2.8   | 1.2 | 8.5 | 8    | 7H  | 0.8 |          | 8     |
| PFTK-5A    | 5     | 30.5 | 6.5  | 14   |     | M9×0.1  | 5     | 2.5 | 10  | 12   | 12H | 0.8 |          | 11    |
| PFTK-6A    | 6     | 30.5 | 6.5  | 14   |     | M9×0.1  | 5     | 2.5 | 10  | 12   | 12H | 0.8 |          | 11    |
| PFTK-8A    | 8     | 31   | 7    | 14   |     | M9×0.1  | 5     | 2.5 | 10  | 12   | 12H | 1.2 |          | 11    |
| PFTK-10A   | 10    | 46   | 7.5  | 22.5 | 10H | M9×0.1  | 5     | 3   | 16  | 15.5 | 12H | 1.5 |          | 15    |
| PFTK-15    | 15    | 46   | 8    | 22   | 10H | M8×1.25 | 5     | 3   | 16  | 15   | 10H | 1.9 | M5×0.8   | 20    |
| PFTK-20    | 20    | 48   | 10   | 22   | 10H | M8×1.25 | 5     | 3   | 16  | 15   | 10H | 2.3 | M5×0.8   | 20    |
| PFTK-25    | 25    | 62   | 14   | 32   | 14H | M10×1.5 | 5     | 3   | 16  | 20   | 14H | 3.0 | M6×1.0   | 40    |
| PFTK-30    | 30    | 60   | 12   | 32   | 14H | M10×1.5 | 5     | 3   | 16  | 20   | 14H | 2.0 | M6×1.0   | 40    |
| PFTK-35    | 35    | 62   | 14   | 32   | 14H | M10×1.5 | 5     | 3   | 16  | 20   | 14H | 3.0 | M6×1.0   | 40    |
| PFTK-40    | 40    | 62   | 14   | 32   | 14H | M10×1.5 | 5     | 3   | 16  | 20   | 14H | 3.5 | M6×1.0   | 40    |
| PFTK-50    | 50    | 63   | 15   | 32   | 14H | M10×1.5 | 5     | 3   | 16  | 20   | 14H | 4.0 | M8×1.25  | 50    |
| PFTK-60    | 60    | 58.5 | 18.5 | 40   | 21H | M16×1.5 | Rc1/8 | 5   |     | 23   | 21H | 5.0 | M10×1.25 | 130   |
| PFTK-80    | 80    | 60.5 | 20.5 | 40   | 21H | M16×1.5 | Rc1/8 | 5   |     | 23   | 21H | 6.0 | M10×1.25 | 170   |
| PFTK-95    | 95    | 61   | 21   | 40   | 21H | M16×1.5 | Rc1/8 | 5   |     | 23   | 21H | 6.0 | M10×1.25 | 220   |

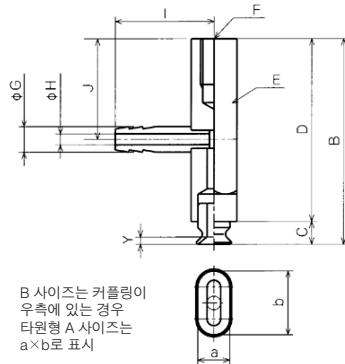
# 표준패드 / 고정식 금구 부착형 / PFTK / PFYK 시리즈

외형치수도

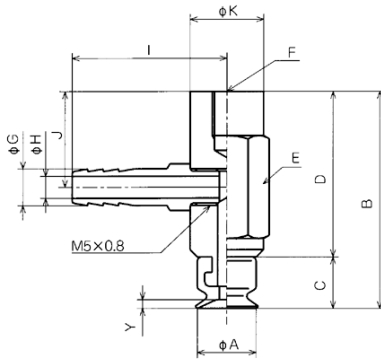
(단위 : mm)



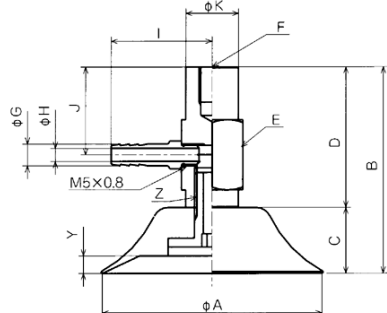
PFYK-1.5A/2A/3.5A



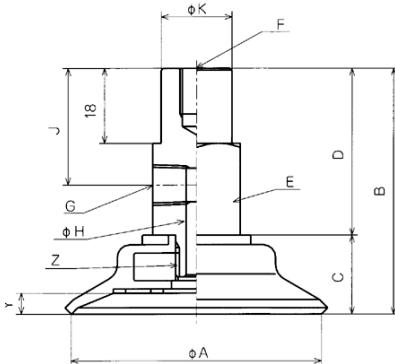
PFYK-2X4/3.5X7



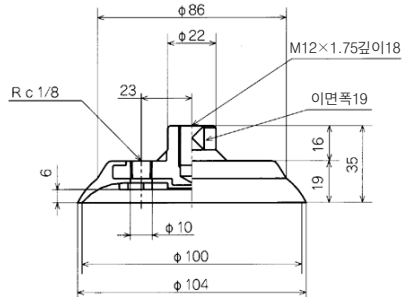
PFYK-5A/6A/8A/10A



PFYK-15/20/25/30/35/40/50

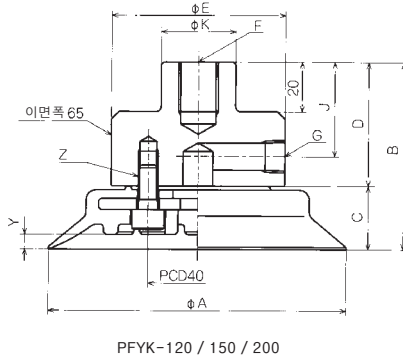


PFYK-60/80/95



PFYK-100

# 표준패드 / 고정식 금구 부착형 / PFTK / PFYK 시리즈



(단위 : mm)

| 품명         | A     | B    | C    | D    | E   | F       | G     | H   | I  | J  | K  | Y   | Z       | 질량(g)    |      |
|------------|-------|------|------|------|-----|---------|-------|-----|----|----|----|-----|---------|----------|------|
| PFYK-1.5A  | 1.5   | 20   | 4    | 16   | 5H  | M3깊이5   | 2.8   | 1.2 | 11 | 11 |    | 0.4 |         | 3        |      |
| PFYK-2A    | 2     | 20   | 4    | 16   | 5H  | M3깊이5   | 2.8   | 1.2 | 11 | 11 |    | 0.5 |         | 3        |      |
| PFYK-2×4   | 2×4   | 21.7 | 1.7  | 20   | 5H  | M3깊이5   | 2.8   | 1.2 | 11 | 11 |    | 0.5 |         | 3        |      |
| PFYK-3.5A  | 3.5   | 20   | 4    | 16   | 5H  | M3깊이5   | 2.8   | 1.2 | 11 | 11 |    | 0.5 |         | 3        |      |
| PFYK-3.5×7 | 3.5×7 | 22.5 | 2.5  | 20   | 5H  | M3깊이5   | 2.8   | 1.2 | 11 | 11 |    | 0.8 |         | 3        |      |
| PFYK-5A    | 5     | 29   | 6.5  | 22.5 | 10H | M4깊이6   | 5     | 3   | 21 | 13 | 10 | 0.8 |         | 16       |      |
| PFYK-6A    | 6     | 29   | 6.5  | 22.5 | 10H | M4깊이6   | 5     | 3   | 21 | 13 | 10 | 0.8 |         | 16       |      |
| PFYK-8A    | 8     | 29.5 | 7    | 22.5 | 10H | M4깊이6   | 5     | 3   | 21 | 13 | 10 | 1.2 |         | 16       |      |
| PFYK-10A   | 10    | 30   | 7.5  | 22.5 | 10H | M4깊이6   | 5     | 3   | 21 | 13 | 10 | 1.5 |         | 16       |      |
| PFYK-15    | 15    | 30   | 8    | 22   | 10H | M4깊이6   | 5     | 3   | 21 | 14 | 10 | 1.9 | M5×0.8  | 20       |      |
| PFYK-20    | 20    | 32   | 10   | 22   | 10H | M4깊이6   | 5     | 3   | 21 | 14 | 10 | 2.3 | M5×0.8  | 20       |      |
| PFYK-25    | 25    | 46   | 14   | 32   | 14H | M6깊이8   | 5     | 3   | 23 | 20 | 12 | 3.0 | M6×1.0  | 40       |      |
| PFYK-30    | 30    | 44   | 12   | 32   | 14H | M6깊이8   | 5     | 3   | 23 | 20 | 12 | 2.0 | M6×1.0  | 40       |      |
| PFYK-35    | 35    | 46   | 14   | 32   | 14H | M6깊이8   | 5     | 3   | 23 | 20 | 12 | 3.0 | M6×1.0  | 40       |      |
| PFYK-40    | 40    | 46   | 14   | 32   | 14H | M6깊이8   | 5     | 3   | 23 | 20 | 12 | 3.5 | M6×1.0  | 50       |      |
| PFYK-50    | 50    | 47   | 15   | 32   | 14H | M6깊이8   | 5     | 3   | 23 | 20 | 12 | 4.0 | M8×1.25 | 55       |      |
| PFYK-60    | 60    | 58.5 | 18.5 | 40   | 21H | M8깊이11  | Rc1/8 | 5   |    |    | 28 | 17  | 5.0     | M10×1.25 | 120  |
| PFYK-80    | 80    | 60.5 | 20.5 | 40   | 21H | M8깊이11  | Rc1/8 | 5   |    |    | 28 | 17  | 6.0     | M10×1.25 | 160  |
| PFYK-95    | 95    | 61   | 21   | 40   | 21H | M8깊이11  | Rc1/8 | 5   |    |    | 28 | 17  | 6.0     | M10×1.25 | 210  |
| PFYK-100   |       |      |      |      |     |         |       |     |    |    |    |     |         | 140      |      |
| PFYK-120   | 120   | 75.5 | 25.5 | 50   | 70  | M16깊이20 | Rc1/8 |     |    |    | 38 | 30  | 6.0     | 4-M8     | 640  |
| PFYK-150   | 150   | 82.5 | 32.5 | 50   | 70  | M16깊이20 | Rc1/8 |     |    |    | 38 | 30  | 9.0     | 4-M8     | 910  |
| PFYK-200   | 200   | 87.5 | 37.5 | 50   | 70  | M16깊이20 | Rc1/8 |     |    |    | 38 | 30  | 13      | 4-M8     | 1200 |



# 표준 패드 / 고정식 금구, 원터치 피팅 부착형 PFTKM / PFYKM 시리즈

## 주문형식

PF T KM - 2A - N

진공취출 방향

|   |     |
|---|-----|
| T | 종방향 |
| Y | 횡방향 |

패드지름

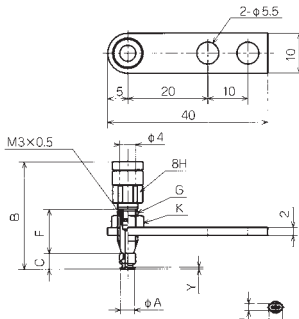
|        |     |
|--------|-----|
| 1.5A   | 10A |
| 2A     | 15  |
| 3.5A   | 20  |
| 2X4A   | 25  |
| 3.5X7A | 30  |
| 5A     | 35  |
| 6A     | 40  |
| 8A     | 50  |

고무재질 및 경도(Hs)

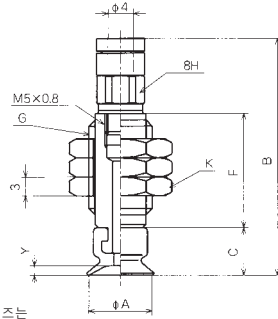
|    |                         |
|----|-------------------------|
| N  | 니트릴 55° (흑색)            |
| S  | 실리콘 55° (백색)            |
| U  | 우레탄 55° (청색)            |
| F  | 플루오린 70° (백색마크부착 흑색)    |
| NE | 도전성 니트릴 70° (청색마크부착 흑색) |
| SE | 도전성 실리콘 55° (적색마크부착 흑색) |
| K  | 금구 세트 (PFG, 고정나사 제외)    |

## 외형치수도

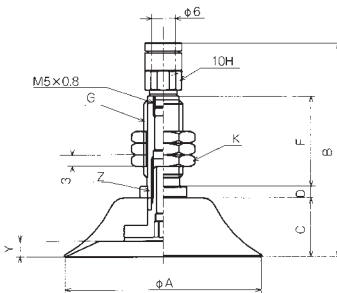
(단위 : mm)



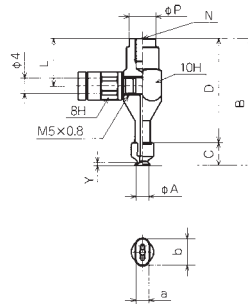
PFTKM-1.5A/2A/2X4A/3.5A/3.5X7A



PFTKM-5A/6A/8A/10A

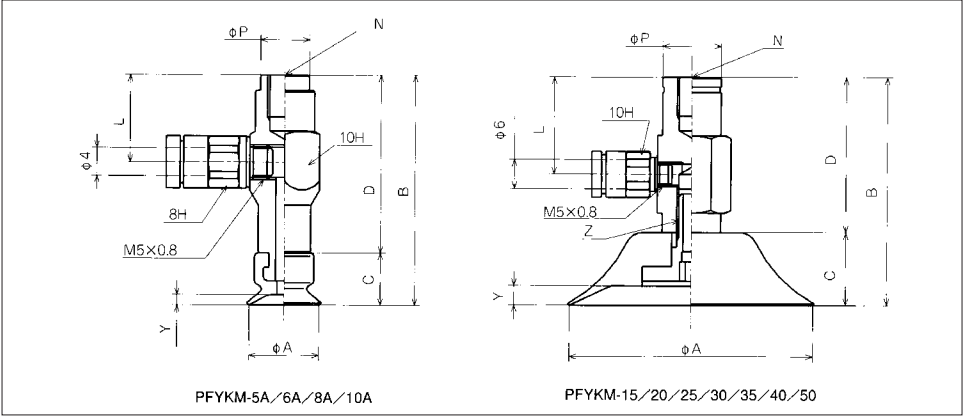


PFTKM-15/20/25/30/35/40/50



PFYKM-2A/2x4A/3.5A/3.5x7A

# 표준패드 / 고정식 금구, 원터치 피팅 부착형 / PFTKM / PFYKM 시리즈



(단위 : mm)

| 품명          | A     | B    | C   | D | F  | G       | K   | Y   | Z      |
|-------------|-------|------|-----|---|----|---------|-----|-----|--------|
| PFTKM-1.5A  | 1.5   | 27.5 | 4   |   | 11 | M5×0.5  | 7H  | 0.4 |        |
| PFTKM-2A    | 2     | 27.5 | 4   |   | 11 | M5×0.5  | 7H  | 0.5 |        |
| PFTKM-2×4   | 2×4   | 27.5 | 6   |   | 9  | M5×0.5  | 7H  | 0.5 |        |
| PFTKM-3.5A  | 3.5   | 27.5 | 4   |   | 11 | M5×0.5  | 7H  | 0.5 |        |
| PFTKM-3.5×7 | 3.5×7 | 27.5 | 6   |   | 9  | M5×0.5  | 7H  | 0.8 |        |
| PFTKM-5A    | 5     | 37.5 | 6.5 |   | 18 | M10×1.5 | 14H | 0.8 |        |
| PFTKM-6A    | 6     | 37.5 | 6.5 |   | 18 | M10×1.5 | 14H | 0.8 |        |
| PFTKM-8A    | 8     | 38   | 7   |   | 18 | M10×1.5 | 14H | 1.2 |        |
| PFTKM-10A   | 10    | 38.5 | 7.5 |   | 18 | M10×1.5 | 14H | 1.5 |        |
| PFTKM-15    | 15    | 48   | 8   | 3 | 23 | M10×1.5 | 14H | 1.9 | M5×0.8 |
| PFTKM-20    | 20    | 50   | 10  | 3 | 23 | M10×1.5 | 14H | 2.3 | M5×0.8 |
| PFTKM-25    | 25    | 54   | 14  | 3 | 23 | M10×1.5 | 14H | 3   | M6×1.0 |
| PFTKM-30    | 30    | 52   | 12  | 3 | 23 | M10×1.5 | 14H | 2   | M6×1.0 |
| PFTKM-35    | 35    | 54   | 14  | 3 | 23 | M10×1.5 | 14H | 3   | M6×1.0 |
| PFTKM-40    | 40    | 54   | 14  | 3 | 23 | M10×1.5 | 14H | 3.5 | M6×1.0 |
| PFTKM-50    | 50    | 55   | 15  | 3 | 23 | M10×1.5 | 14H | 4   | M6×1.0 |

| 품명          | A     | B    | C   | D    | L    | N     | P  | Y   | Z      |
|-------------|-------|------|-----|------|------|-------|----|-----|--------|
| PFYKM-1.5A  | 1.5   | 31.5 | 4   | 27.5 | 12.5 | M4깊이6 | 7  | 0.4 |        |
| PFYKM-2A    | 2     | 31.5 | 4   | 27.5 | 12.5 | M4깊이6 | 7  | 0.5 |        |
| PFYKM-2×4   | 2×4   | 33.5 | 6   | 27.5 | 12.5 | M4깊이6 | 7  | 0.5 |        |
| PFYKM-3.5A  | 3.5   | 31.5 | 4   | 27.5 | 12.5 | M4깊이6 | 7  | 0.5 |        |
| PFYKM-3.5×7 | 3.5×7 | 33.5 | 6   | 27.5 | 12.5 | M4깊이6 | 7  | 0.8 |        |
| PFYKM-5A    | 5     | 32   | 6.5 | 25.5 | 12.5 | M5깊이6 | 7  | 0.8 |        |
| PFYKM-6A    | 6     | 32   | 6.5 | 25.5 | 12.5 | M5깊이6 | 7  | 0.8 |        |
| PFYKM-8A    | 8     | 32.5 | 7   | 25.5 | 12.5 | M5깊이6 | 7  | 1.2 |        |
| PFYKM-10A   | 10    | 33   | 7.5 | 25.5 | 12.5 | M5깊이6 | 7  | 1.5 |        |
| PFYKM-15    | 15    | 30   | 8   | 22   | 14   | M6깊이6 | 9  | 1.9 | M5×0.8 |
| PFYKM-20    | 20    | 32   | 10  | 22   | 14   | M6깊이6 | 9  | 2.3 | M5×0.8 |
| PFYKM-25    | 25    | 46   | 14  | 32   | 20   | M6깊이8 | 12 | 3   | M6×1.0 |
| PFYKM-30    | 30    | 44   | 12  | 32   | 20   | M6깊이8 | 12 | 2   | M6×1.0 |
| PFYKM-35    | 35    | 46   | 14  | 32   | 20   | M6깊이8 | 12 | 3   | M6×1.0 |
| PFYKM-40    | 40    | 46   | 14  | 32   | 20   | M6깊이8 | 12 | 3.5 | M6×1.0 |
| PFYKM-50    | 50    | 47   | 15  | 32   | 20   | M6깊이8 | 12 | 4   | M6×1.0 |

# 표준 패드 / 스프링식 금구 부착형 NAPFTS / NAPFYS 시리즈

## 주문형식

NAPF **T** S - **2A-3** - **N** **T**

진공취출 방향

|   |     |
|---|-----|
| T | 중방향 |
| Y | 횡방향 |

패드지름 - 스트로크

|        |        |        |
|--------|--------|--------|
| 1.5A-3 | 20B-15 | 50-30  |
| 1.5A-6 | 20B-30 | 60-10  |
| 2A-3   | 20B-15 | 60-10  |
| 2A-6   | 20B-30 | 60-30  |
| 3.5A-3 | 25-6   | 60-50  |
| 3.5A-6 | 25-15  | 80-10  |
| 5A-3   | 25-30  | 80-30  |
| 5A-6   | 30-6   | 80-50  |
| 6A-3   | 30-15  | 95-10  |
| 6A-6   | 30-30  | 95-30  |
| 8A-3   | 35-6   | 95-50  |
| 8A-6   | 35-15  | 120-20 |
| 10A-3  | 35-30  | 120-50 |
| 10A-10 | 40-6   | 150-20 |
| 10A-15 | 40-15  | 150-50 |
| 15A-3  | 40-30  | 200-20 |
| 15A-10 | 50-6   | 200-50 |
| 15A-15 | 50-15  |        |
| 20B-6  | 50-30  |        |

패드지름

|     |      |
|-----|------|
| 무기호 | 없음   |
| T   | 스프링식 |
| O   | 원터치식 |

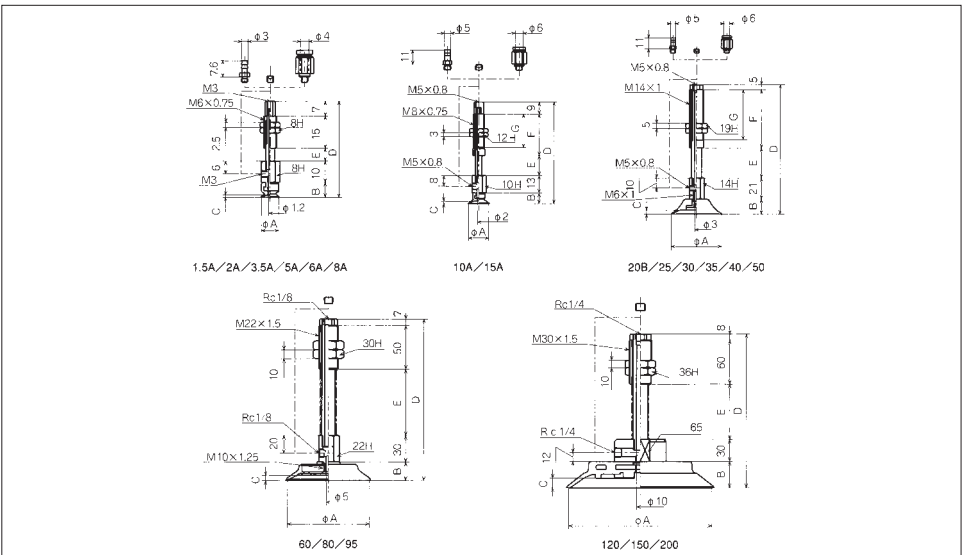
패드지름이 60인 경우 커플링이 공급되지 않습니다.

고무재질 및 경도(Hs)

|    |                         |
|----|-------------------------|
| N  | 니트릴 55° (흑색)            |
| S  | 실리콘 55° (백색)            |
| U  | 우레탄 55° (청색)            |
| F  | 플루오린 70° (백색마크부착 흑색)    |
| NE | 도전성 니트릴 70° (청색마크부착 흑색) |
| SE | 도전성 실리콘 55° (적색마크부착 흑색) |
| K  | 금구 세트 (PFG, 고정나사 제외)    |

## 외형치수도

(단위 : mm)



# 표준패드 / 스프링식 금구 부착형 / NAPFTS / NAPFYS

(단위 : mm)

| 품명              | A   | B    | C   | D     | E  | F    | G    | F <sup>1</sup> | F <sup>2</sup> | 질량(g) |
|-----------------|-----|------|-----|-------|----|------|------|----------------|----------------|-------|
| NAPFT/YS-1.5A-3 | 1.5 | 4    | 0.4 | 39    | 3  |      |      | 0.49           | 0.59           | 6     |
| NAPFT/YS-1.5A-6 | 1.5 | 4    | 0.4 | 42    | 6  |      |      | 0.49           | 0.69           | 6     |
| NAPFT/YS-2A-3   | 2   | 4    | 0.5 | 39    | 3  |      |      | 0.49           | 0.59           | 6     |
| NAPFT/YS-2A-6   | 2   | 4    | 0.5 | 42    | 6  |      |      | 0.49           | 0.69           | 6     |
| NAPFT/YS-3.5A-3 | 3.5 | 4    | 0.5 | 39    | 3  |      |      | 0.49           | 0.59           | 6     |
| NAPFT/YS-3.5A-6 | 3.5 | 4    | 0.5 | 42    | 6  |      |      | 0.49           | 0.69           | 6     |
| NAPFT/YS-5A-3   | 5   | 6.5  | 0.8 | 41.5  | 3  |      |      | 0.49           | 0.59           | 7     |
| NAPFT/YS-5A-6   | 5   | 6.5  | 0.8 | 44.5  | 6  |      |      | 0.49           | 0.69           | 7     |
| NAPFT/YS-6A-3   | 6   | 6.5  | 0.8 | 41.5  | 3  |      |      | 0.49           | 0.59           | 7     |
| NAPFT/YS-6A-6   | 6   | 6.5  | 0.8 | 44.5  | 6  |      |      | 0.49           | 0.69           | 7     |
| NAPFT/YS-8A-3   | 8   | 7    | 1.2 | 42    | 3  |      |      | 0.49           | 0.59           | 7     |
| NAPFT/YS-8A-6   | 8   | 7    | 1.2 | 45    | 6  |      |      | 0.49           | 0.69           | 7     |
| NAPFT/YS-10A-3  | 10  | 7.5  | 1.5 | 55.5  | 3  | 23   | 17   | 0.61           | 0.77           | 18    |
| NAPFT/YS-10A-10 | 10  | 7.5  | 1.5 | 62.5  | 10 | 23   | 17   | 0.61           | 1.17           | 18.5  |
| NAPFT/YS-10A-15 | 10  | 7.5  | 1.5 | 75    | 15 | 30.5 | 24.5 | 0.64           | 1.17           | 21    |
| NAPFT/YS-15A-3  | 15  | 8    | 2   | 56    | 3  | 23   | 17   | 0.61           | 0.77           | 18    |
| NAPFT/YS-15A-10 | 15  | 8    | 2   | 63    | 10 | 23   | 17   | 0.61           | 1.17           | 18.5  |
| NAPFT/YS-15A-15 | 15  | 8    | 2   | 75.5  | 15 | 30.5 | 24.5 | 0.64           | 1.17           | 21    |
| NAPFT/YS-20B-6  | 20  | 12.5 | 2.3 | 80.5  | 6  | 36   | 28   | 2.45           | 3.43           | 65.5  |
| NAPFT/YS-20B-15 | 20  | 12.5 | 2.3 | 89.5  | 15 | 36   | 28   | 2.45           | 4.9            | 70.5  |
| NAPFT/YS-20B-30 | 20  | 12.5 | 2.3 | 126.5 | 30 | 58   | 50   | 2.9            | 5.88           | 95.5  |
| NAPFT/YS-25-6   | 25  | 14   | 3   | 82    | 6  | 36   | 28   | 2.45           | 3.43           | 66    |
| NAPFT/YS-25-15  | 25  | 14   | 3   | 91    | 15 | 36   | 28   | 2.45           | 4.9            | 71    |
| NAPFT/YS-25-30  | 25  | 14   | 3   | 128   | 30 | 58   | 50   | 2.9            | 5.88           | 96    |
| NAPFT/YS-30-6   | 30  | 12   | 2   | 80    | 6  | 36   | 28   | 2.45           | 3.43           | 67    |
| NAPFT/YS-30-15  | 30  | 12   | 2   | 89    | 15 | 36   | 28   | 2.45           | 4.9            | 72    |
| NAPFT/YS-30-30  | 30  | 12   | 2   | 126   | 30 | 58   | 50   | 2.9            | 5.88           | 97    |
| NAPFT/YS-35-6   | 35  | 14   | 3   | 82    | 6  | 36   | 28   | 2.45           | 3.43           | 69.5  |
| NAPFT/YS-35-15  | 35  | 14   | 3   | 91    | 15 | 36   | 28   | 2.45           | 4.9            | 74.5  |
| NAPFT/YS-35-30  | 35  | 14   | 3   | 128   | 30 | 58   | 50   | 2.9            | 5.88           | 99.5  |
| NAPFT/YS-40-6   | 40  | 14   | 3.5 | 82    | 6  | 36   | 28   | 2.45           | 3.43           | 71    |
| NAPFT/YS-40-15  | 40  | 14   | 3.5 | 91    | 15 | 36   | 28   | 2.45           | 4.9            | 76    |
| NAPFT/YS-40-30  | 40  | 14   | 3.5 | 128   | 30 | 58   | 50   | 2.9            | 5.88           | 101   |
| NAPFT/YS-50-6   | 50  | 15   | 4   | 83    | 6  | 36   | 28   | 2.45           | 3.43           | 80    |
| NAPFT/YS-50-15  | 50  | 15   | 4   | 92    | 15 | 36   | 28   | 2.45           | 4.9            | 85    |
| NAPFT/YS-50-30  | 50  | 15   | 4   | 129   | 30 | 58   | 50   | 2.9            | 5.88           | 110   |
| NAPFT/YS-60-10  | 60  | 18.5 | 5   | 125.5 | 20 |      |      | 8.82           | 11.8           | 282.5 |
| NAPFT/YS-60-30  | 60  | 18.5 | 5   | 155.5 | 50 |      |      | 6.76           | 15.6           | 316.5 |
| NAPFT/YS-60-50  | 60  | 18.5 | 5   | 180.5 | 75 |      |      | 8.33           | 19.6           | 343.5 |
| NAPFT/YS-80-10  | 80  | 20.5 | 6   | 127.5 | 20 |      |      | 8.82           | 11.8           | 310.5 |
| NAPFT/YS-80-30  | 80  | 20.5 | 6   | 157.5 | 50 |      |      | 6.76           | 15.6           | 344.5 |
| NAPFT/YS-80-50  | 80  | 20.5 | 6   | 182.5 | 75 |      |      | 8.33           | 19.6           | 371.5 |
| NAPFT/YS-95-10  | 95  | 21   | 6   | 128   | 20 |      |      | 8.82           | 11.8           | 350.5 |
| NAPFT/YS-95-30  | 95  | 21   | 6   | 158   | 50 |      |      | 6.76           | 15.6           | 384.5 |
| NAPFT/YS-95-50  | 5   | 21   | 6   | 182   | 75 |      |      | 8.33           | 19.6           | 411.5 |
| NAPFT/YS-120-20 | 120 | 24   | 6   | 157   | 35 |      |      | 15.6           | 29.4           | 1165  |
| NAPFT/YS-120-50 | 120 | 24   | 6   | 197   | 75 |      |      | 14.7           | 29.4           | 1246  |
| NAPFT/YS-150-20 | 150 | 31   | 9   | 164   | 35 |      |      | 15.6           | 29.4           | 1389  |
| NAPFT/YS-150-50 | 150 | 31   | 9   | 204   | 75 |      |      | 14.7           | 29.4           | 1470  |
| NAPFT/YS-200-20 | 200 | 36   | 13  | 169   | 35 |      |      | 15.6           | 29.4           | 1755  |
| NAPFT/YS-200-50 | 200 | 36   | 13  | 209   | 75 |      |      | 14.7           | 29.4           | 1836  |

주) F : 0 스트로크시 스프링력(N), F : 최대스트로크시 스프링력

## 커플링 질량

|   | 외경 $\phi 4$ | 외경 $\phi 6$ |
|---|-------------|-------------|
| T | 0.5         | 1.5         |
| O | 2.5         | 4.5         |

# 표준 패드 / 스프링식 금구 부착형, 회정방지형 NAPFTH / NAPFYH 시리즈

## 주문형식

**NAPF T H - 2A-3 - N T**

진공취출 방향 ●

|   |     |
|---|-----|
| T | 중방향 |
| Y | 횡방향 |

패dzi름-스트로크 ●

|           |        |        |
|-----------|--------|--------|
| 1.5A-3    | 5A-10  | 20B-30 |
| 1.5A-10   | 5A-15  | 25-6   |
| 1.5A-15   | 6A-3   | 25-15  |
| 2A-3      | 6A-10  | 25-30  |
| 2A-10     | 6A-15  | 30-6   |
| 2A-15     | 8A-3   | 30-15  |
| 3.5A-3    | 8A-10  | 30-30  |
| 3.5A-10   | 8A-15  | 35-6   |
| 3.5A-15   | 10A-3  | 35-15  |
| 2X4A-3    | 10A-10 | 35-30  |
| 2X4A-10   | 10A-15 | 40-6   |
| 2X4A-15   | 15A-3  | 40-15  |
| 3.5X7A-3  | 15A-10 | 40-30  |
| 3.5X7A-10 | 15A-15 | 50-6   |
| 3.5X7A-15 | 20B-6  | 50-15  |
| 5A-3      | 20B-15 | 50-30  |

패dzi름

|     |      |
|-----|------|
| 무기호 | 없음   |
| T   | 스프링식 |
| O   | 원터치식 |

● 고무재질 및 경도(Hs)

|    |                         |
|----|-------------------------|
| N  | 니트릴 55° (흑색)            |
| S  | 실리콘 55° (백색)            |
| U  | 우레탄 55° (청색)            |
| F  | 플루오린 70° (백색마크부착 흑색)    |
| NE | 도전성 니트릴 70° (청색마크부착 흑색) |
| SE | 도전성 실리콘 55° (적색마크부착 흑색) |
| K  | 금구 세트 (PFG, 고정나사 제외)    |

## 외형치수도

(단위: mm)

1.5A/2A/3.5A

2X4A/3.5X7A

5A/6A/8A/10A/15A

20B/25/30/35/40/50

# 표준패드 / 스프링식 금구 부착형, 회전방지형 / NAPFTH / NAPFYH 시리즈

(단위 : mm)

| 품명                 | A               | B    | C   | D    | E  | F    | G    | H   | F <sup>1</sup> | F <sup>2</sup> | 질량(g) |
|--------------------|-----------------|------|-----|------|----|------|------|-----|----------------|----------------|-------|
| NAPCT/YH-1.5A-3    | 1.5             |      | 0.4 | 50   | 3  | 23   | 17   |     | 0.27           | 0.43           | 15.5  |
| NAPCT/YH-1.5A-10   | 1.5             |      | 0.4 | 57   | 10 | 23   | 17   |     | 0.27           | 0.82           | 17    |
| NAPCT/YH-1.5A-15   | 1.5             |      | 0.4 | 69.5 | 15 | 30.5 | 24.5 |     | 0.29           | 0.83           | 20    |
| NAPCT/YH-2A-3      | 2               |      | 0.5 | 50   | 3  | 23   | 17   |     | 0.27           | 0.43           | 15.5  |
| NAPCT/YH-2A-10     | 2               |      | 0.5 | 57   | 10 | 23   | 17   |     | 0.27           | 0.82           | 17    |
| NAPCT/YH-2A-15     | 2               |      | 0.5 | 69.5 | 15 | 30.5 | 24.5 |     | 0.29           | 0.83           | 20    |
| NAPCT/YH-3.5A-3    | 3.5             |      | 0.5 | 50   | 3  | 23   | 17   |     | 0.27           | 0.43           | 15.5  |
| NAPCT/YH-3.5A-10   | 3.5             |      | 0.5 | 57   | 10 | 23   | 17   |     | 0.27           | 0.82           | 17    |
| NAPCT/YH-3.5A-15   | 3.5             |      | 0.5 | 69.5 | 15 | 30.5 | 24.5 |     | 0.29           | 0.83           | 20    |
| NAPCT/YH-2×4A-3    | 2×4             |      | 0.5 | 52   | 3  | 23   | 17   |     | 0.27           | 0.43           | 15.5  |
| NAPCT/YH-2×4A-10   | 2×4             |      | 0.5 | 59   | 10 | 23   | 17   |     | 0.27           | 0.82           | 17    |
| NAPCT/YH-2×4A-15   | 2×4             |      | 0.5 | 71.5 | 15 | 30.5 | 24.5 |     | 0.29           | 0.83           | 20    |
| NAPCT/YH-3.5×7A-3  | 3.5×7           |      | 0.8 | 52   | 3  | 23   | 17   |     | 0.27           | 0.43           | 15.5  |
| NAPCT/YH-3.5×7A-10 | 3.5×7           |      | 0.8 | 59   | 10 | 23   | 17   |     | 0.27           | 0.82           | 17    |
| NAPCT/YH-3.5×7A-15 | 3.5×7           |      | 0.8 | 71.5 | 15 | 30.5 | 24.5 |     | 0.29           | 0.83           | 20    |
| NAPCT/YH-5A-3      | 5               | 6.5  | 0.8 | 54.5 | 3  | 23   | 17   | 1.4 | 0.61           | 0.77           | 18    |
| NAPCT/YH-5A-10     | 5               | 6.5  | 0.8 | 61.5 | 10 | 23   | 17   | 1.4 | 0.61           | 1.17           | 18.5  |
| NAPCT/YH-5A-15     | 5               | 6.5  | 0.8 | 74   | 15 | 30.5 | 24.5 | 1.4 | 0.64           | 1.17           | 21.5  |
| NAPCT/YH-6A-5      | 6               | 6.5  | 0.8 | 54.5 | 3  | 23   | 17   | 2   | 0.61           | 0.77           | 18    |
| NAPCT/YH-6A-15     | 6               | 6.5  | 0.8 | 61.5 | 10 | 23   | 17   | 2   | 0.61           | 1.17           | 18.5  |
| NAPCT/YH-6A-30     | 6               | 6.5  | 0.8 | 74   | 15 | 30.5 | 24.5 | 2   | 0.64           | 1.17           | 21.5  |
| NAPCT/YH-8A-3      | 8               | 7    | 1.2 | 55   | 3  | 23   | 17   | 2   | 0.61           | 0.77           | 18    |
| NAPCT/YH-8A-15     | 8               | 7    | 1.2 | 62   | 10 | 23   | 17   | 2   | 0.61           | 1.17           | 18.5  |
| NAPCT/YH-8A-30     | 8               | 7    | 1.2 | 74.5 | 15 | 30.5 | 24.5 | 2   | 0.64           | 1.17           | 21.5  |
| NAPCT/YH-10A-3     | 10              | 7.5  | 1.5 | 55.5 | 3  | 23   | 17   | 2   | 0.61           | 0.77           | 18.5  |
| NAPCT/YH-10A-15    | 10              | 7.5  | 1.5 | 62.5 | 10 | 23   | 17   | 2   | 0.61           | 1.17           | 19    |
| NAPCT/YH-10A-30    | 10              | 7.5  | 1.5 | 75   | 15 | 30.5 | 24.5 | 2   | 0.64           | 1.17           | 22    |
| NAPCT/YH-15A-3     | 15              | 8    | 2   | 56   | 3  | 23   | 17   | 2   | 0.61           | 0.77           | 18.5  |
| NAPCT/YH-15A-10    | 15              | 8    | 2   | 63   | 10 | 23   | 17   | 2   | 0.61           | 1.17           | 19    |
| NAPCT/YH-15A-15    | 15              | 8    | 2   | 75.5 | 15 | 30.5 | 24.5 | 2   | 0.64           | 1.17           | 22    |
| NAPCT/YH-20B-6     | 20              | 12.5 | 2.3 | 80.5 | 6  | 36   | 28   |     | 2.45           | 3.43           | 64    |
| NAPCT/YH-20B-15    | 20              | 12.5 | 2.3 | 89.5 | 10 | 36   | 28   |     | 2.45           | 4.9            | 69    |
| NAPCT/YH-20B-30    | 20              | 12.5 | 2.3 | 12.6 | 15 | 58   | 50   |     | 2.9            | 5.88           | 93    |
| NAPCT/YH-25-6      | 25              | 14   | 3   | 82   | 6  | 36   | 28   |     | 2.45           | 3.43           | 64.5  |
| NAPCT/YH-25-15     | 25              | 14   | 3   | 91   | 10 | 36   | 28   |     | 2.45           | 4.9            | 69.5  |
| NAPCT/YH-25-30     | 25              | 14   | 3   | 128  | 15 | 58   | 50   |     | 2.9            | 5.88           | 93.5  |
| NAPCT/YH-30-6      | 30              | 12   | 2   | 80   | 6  | 36   | 28   |     | 2.45           | 3.43           | 65.5  |
| NAPCT/YH-30-15     | 30              | 12   | 2   | 89   | 10 | 36   | 28   |     | 2.45           | 4.9            | 70.5  |
| NAPCT/YH-30-30     | 30              | 12   | 2   | 126  | 15 | 58   | 50   |     | 2.9            | 5.88           | 94.5  |
| NAPCT/YH-35-6      | 35              | 14   | 3   | 82   | 6  | 36   | 28   |     | 2.45           | 3.43           | 68    |
| NAPCT/YH-35-15     | 35              | 14   | 3   | 91   | 10 | 36   | 28   |     | 2.45           | 4.9            | 73    |
| NAPCT/YH-35-30     | 35              | 14   | 3   | 128  | 15 | 58   | 50   |     | 2.9            | 5.88           | 97    |
| NAPCT/YH-40-6      | 40              | 14   | 3.5 | 82   | 6  | 36   | 28   |     | 2.45           | 3.43           | 96.5  |
| NAPCT/YH-40-15     | 40              | 14   | 3.5 | 91   | 10 | 36   | 28   |     | 2.45           | 4.9            | 74.5  |
| NAPCT/YH-40-30     | 40              | 14   | 3.5 | 128  | 15 | 58   | 50   |     | 2.9            | 5.88           | 98.5  |
| NAPCT/YH-50-6      | 50 <sub>F</sub> | 15   | 4   | 93   | 6  | 36   | 28   |     | 2.45           | 3.43           | 78    |
| NAPCT/YH-50-15     | 50 <sub>F</sub> | 15   | 4   | 92   | 10 | 36   | 28   |     | 2.45           | 4.9            | 83    |
| NAPCT/YH-50-30     | 50              | 15   | 4   | 129  | 15 | 58   | 50   |     | 2.9            | 5.88           | 107   |

주) F<sup>1</sup>: 0 스트로크시 스프링력(N), F<sup>2</sup>: 최대스트로크시 스프링력(N)

## 커플링 질량

|   | 외경 $\phi$ 4 | 외경 $\phi$ 6 |
|---|-------------|-------------|
| T | 0.5         | 1.5         |
| O | 2.5         | 4.5         |