

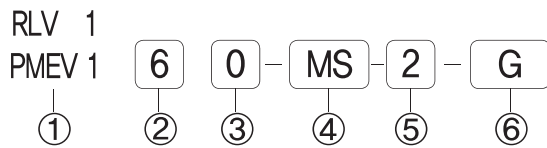
RLV 160 PMEV160

RLV, PMEV160시리즈, M5, 3/2Way, 메카니컬 밸브



- ◆ 성능 및 내구성향상
- ◆ 직동형작동
- ◆ 콤팩트형 디자인
- ◆ 액추에이터 다양화
- ◆ 무급유 타입

◆ 주문형식 표기방법



- ① **시리즈**
RLV160 시리즈
PMEV160 시리즈
- ② **복귀방식**
6 : 3/2way 스프링리턴
- ③ **관접속구경**
0 : M5
1 : 10*32 UNF
- ④ **액추에이터**
PU : 기본형
1RP : 롤러레버
1RB : 롤러레버 베어링
2RP : 2단롤러레버(1방향)
2RB : 2단 롤러레버 베어링(1방향)
FP : 누름버튼
MS : 비상버튼(버섯형)
SL : 2위치 셀렉터
MT : 2위치 비상정지
- ⑤ **스위치 판넬규격**
2 : 판넬취부 Ø25 (표준)
3 : 판넬취부 Ø30
- ⑥ **스위치 컬러(FP, MS)**
무기호 : 기본컬러(R)
R : 레드컬러
G : 그린컬러
B : 블랙컬러

◆ 사양

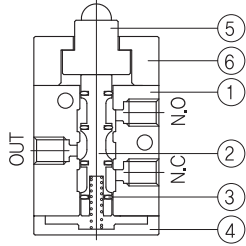
절환방식	3포트 2위치
사용유체	공기 및 불활성 가스
사용압력	0.0~0.8 Mpa
유효단면적(mm ²)	3.5
주위 및 사용유체온도	5 ~ 60° (41~ 140°F)
급 유	불필요
접속구경	M5

◆ 밸브형식

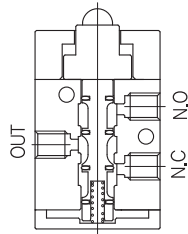
동작방식	모 델	액추에이터	부품품번	유효단면적mm ²
기계조작	RLV160-PU	기본형	-	3.5mm ²
	RLV160-1RP	롤러레버	RLV1-1RP	
	RLV160-1RB	롤러레버 베어링	RLV1-1RB	
	RLV160-2RP	2단 롤러레버(1방향)	RLV1-2RP	
	RLV160-2RB	2단 롤러레버 베어링(1방향)	RLV1-2RB	
수동조작	PMEV160-FP-2	누름버튼	PMEV1-FP-2	
	PMEV160-MS-2	비상버튼(버섯형)	PMEV1-MS-2	
	PMEV160-SL-2	2위치 셀렉터	PMEV1-SL-2	
	PMEV160-MT-2	2위치 비상정지	PMEV1-MT-2	

◆ 밸브형식

초기상태



작동상태

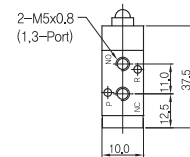
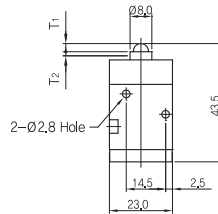
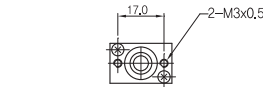
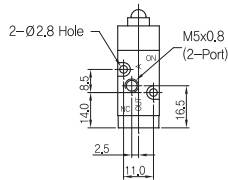
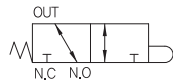


◆ 구성부품

번호	부품명	비고
①	바디	알루미늄 다이캐스팅
②	스플	알루미늄
③	패킹	NBR
④	바디캡	알루미늄 다이캐스팅
⑤	버튼	탄소강
⑥	파일럿트	아연 다이캐스팅

▶ 기본형

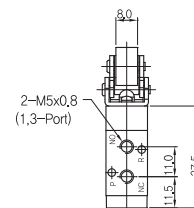
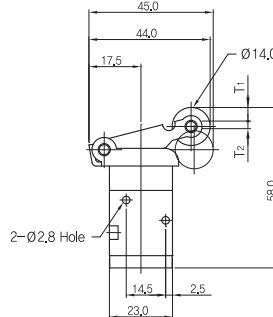
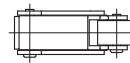
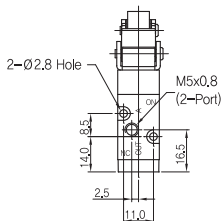
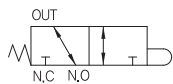
RLV160-PU



T1	유효 동작 거리	2,0mm
T2	무효 동작 거리	1,0mm
F1	유효 조작에 필요한 하중	2,0kg
F2	무효 조작에 필요한 하중	2,0kg

▶ 1단 롤러레버

RLV160-1RP

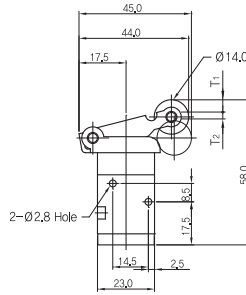
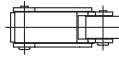
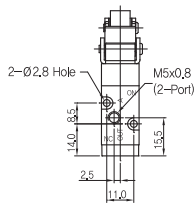
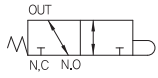


T1	유효 동작 거리	6,0mm
T2	무효 동작 거리	2,0mm
F1	유효 조작에 필요한 하중	1,0kg
F2	무효 조작에 필요한 하중	1,0kg

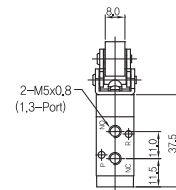
◆ 밸브 치수도

▶ 1단 롤러레버 베어링

RLV160-1RB

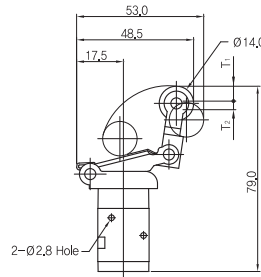
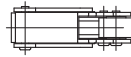
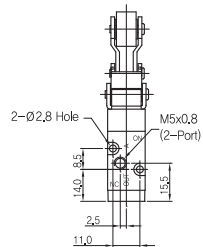
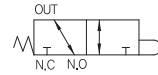


T1	유효 동작 거리	8,0mm
T2	무효 동작 거리	3,0mm
F1	유효 조작에 필요한 하중	2,0kg
F2	무효 조작에 필요한 하중	

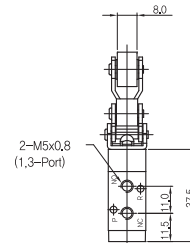


▶ 2단 롤러레버 1방향

RLV160-2RP

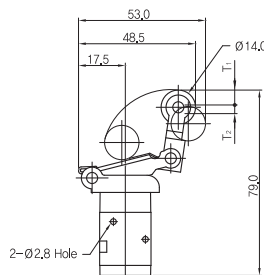
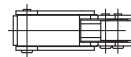
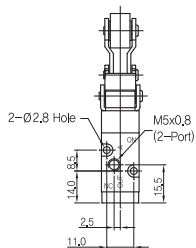
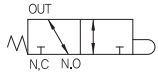


T1	유효 동작 거리	9,0mm
T2	무효 동작 거리	3,5mm
F1	유효 조작에 필요한 하중	2,0kg
F2	무효 조작에 필요한 하중	

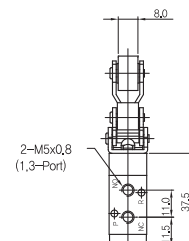


▶ 2단 롤러레버 베어링 1방향

RLV160-2RB



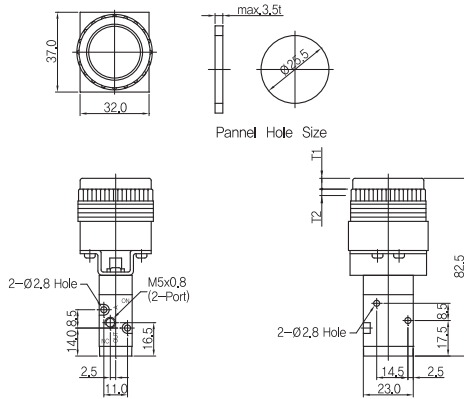
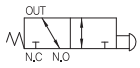
T1	유효 동작 거리	9,0mm
T2	무효 동작 거리	3,5mm
F1	유효 조작에 필요한 하중	2,0kg
F2	무효 조작에 필요한 하중	



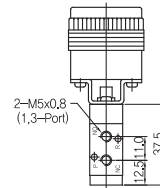
◆ 밸브 치수도

▶ 누름버튼 매립형

PMEV160-FP-2

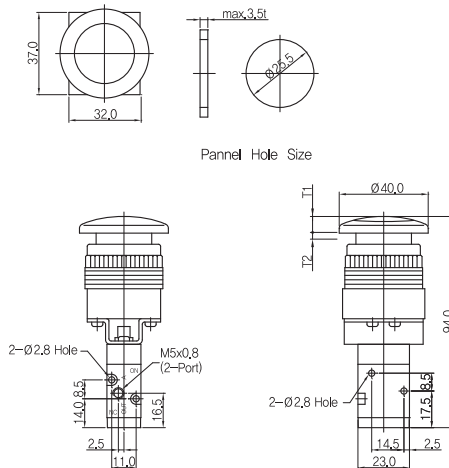
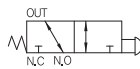


T1	유효 동작 거리	5,5mm
T2	무효 동작 거리	1,0mm
F1	유효 조작에 필요한 하중	3,5kg
F2	무효 조작에 필요한 하중	

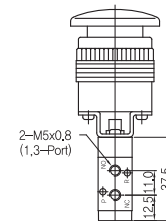


▶ 비상버튼 버섯형

PMEV160-MS-2

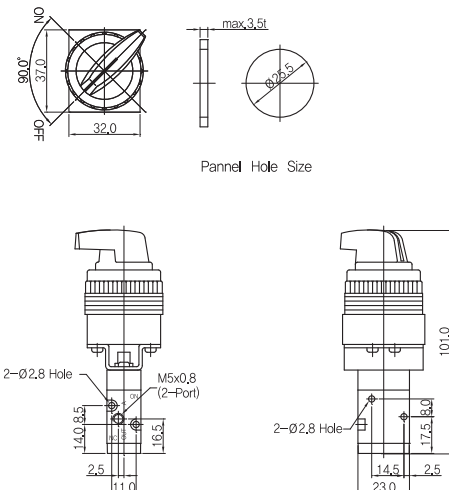
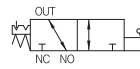


T1	유효 동작 거리	5,5mm
T2	무효 동작 거리	1,0mm
F1	유효 조작에 필요한 하중	3,5kg
F2	무효 조작에 필요한 하중	

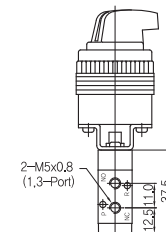


▶ 2위치 셀렉터

PMEV160-SL-2



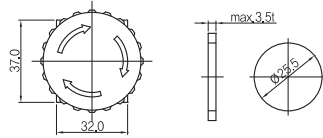
T1	유효 동작 거리	4,0mm
T2	무효 동작 거리	
F1	유효 조작에 필요한 하중	3,5kg
F2	무효 조작에 필요한 하중	



◆ 밸브 치수도

▶ 비상정지

PME160-MT-2



Panel Hole Size

T1	유효 동작 거리	4.0mm
T2	무효 동작 거리	
F1	유효 조작에 필요한 하중	3.5kg
F2	무효 조작에 필요한 하중	

