

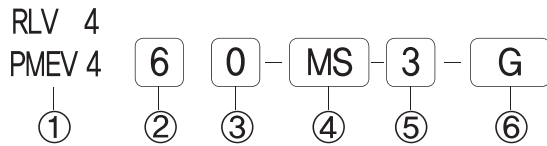
# RLV 460 PMEV460

RLV, PMEV460시리즈, 1/4, 3/2Way, 메카니컬 밸브



- ◆ 성능 및 내구성향상
- ◆ 직동형작동
- ◆ 장수명
- ◆ 액추에이터 다양화
- ◆ 무급유 타입

### ◆ 주문형식 표기방법



- ① **시리즈**  
RLV460 시리즈  
PMEV460 시리즈
- ② **복귀방식**  
6 : 3/2 스프링리턴
- ③ **관접속구경**  
0 : 1/4  
1 : NPT 1/4
- ④ **액추에이터**  
PU : 기본형  
1RP : 롤러레버  
1RB : 롤러레버 베어링  
2RP : 2단롤러레버(1방향)
- ⑤ **스위치 판넬규격**  
3 : 판넬취부 Ø30 (표준)  
2 : 판넬취부 Ø25
- ⑥ **스위치 컬러(FP, MS)**  
무기호 : 기본컬러(R)  
R : 레드컬러  
G : 그린컬러  
B : 블랙컬러
- 2RB : 2단 롤러레버 베어링(1방향)  
FP : 누름버튼  
MS : 비상버튼(버섯형)  
SL : 2위치 셀렉터  
MT : 2위치 비상정지

### ◆ 사양

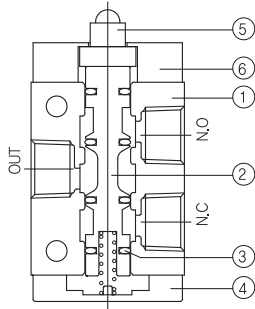
절환방식	3포트 2위치
사용유체	공기 및 불활성 가스
사용압력	0.0~0.8 Mpa
유효단면적(mm <sup>2</sup> )	19.0
주위 및 사용유체온도	5 ~ 60° (41~ 140°F)
급 유	불필요
접속구경	1/4

### ◆ 밸브형식

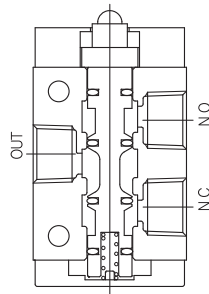
동작방식	모 델	액추에이터	부품품번	유효단면적mm <sup>2</sup>
기계조작	RLV460-PU	기본형	-	19.0mm <sup>2</sup>
	RLV460-1RP	롤러레버	RLV4-1RP	
	RLV460-1RB	롤러레버 베어링	RLV4-1RB	
	RLV460-2RP	2단 롤러레버(1방향)	RLV4-2RP	
	RLV460-2RB	2단 롤러레버 베어링(1방향)	RLV4-2RB	
수동조작	PMEV460-FP-3	누름버튼	PMEV4-FP-3	
	PMEV460-MS-3	비상버튼(버섯형)	PMEV4-MS-3	
	PMEV460-SL-3	2위치 셀렉터	PMEV4-SL-3	
	PMEV460-MT-3	2위치 비상정지	PMEV4-MT-3	

## ◆ 밸브형식

초기상태



작동상태

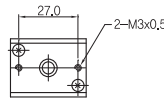
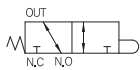


## ◆ 구성부품

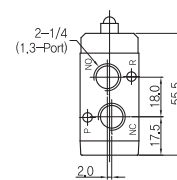
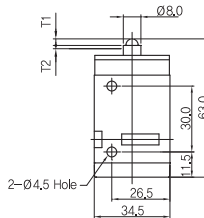
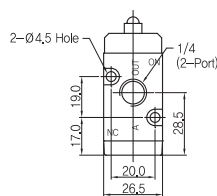
번호	부품명	비고
①	바디	알루미늄 다이캐스팅
②	스플	알루미늄
③	패킹	NBR
④	바디캡	알루미늄 다이캐스팅
⑤	버튼	탄소강
⑥	파일럿트	아연 다이캐스팅

## ▶ 기본형

RLV460-PU

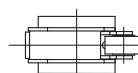
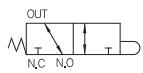


T1	유효 동작 거리	2,0mm
T2	무효 동작 거리	1,0mm
F1	유효 조작에 필요한 하중	2,0kg
F2	무효 조작에 필요한 하중	

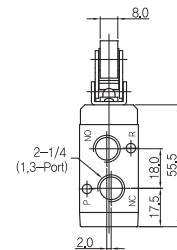
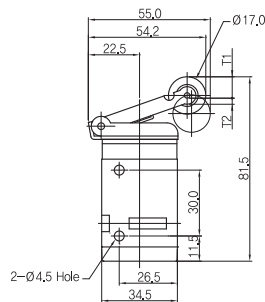
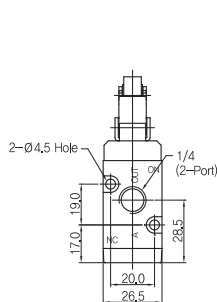


## ▶ 1단 롤러레버

RLV460-1RP



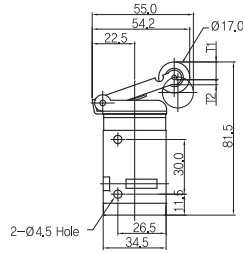
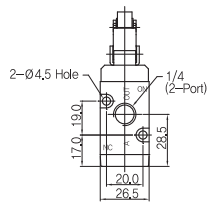
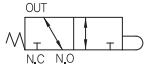
T1	유효 동작 거리	6,0mm
T2	무효 동작 거리	2,0mm
F1	유효 조작에 필요한 하중	1,0kg
F2	무효 조작에 필요한 하중	



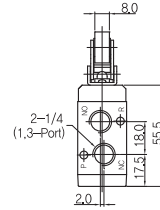
## ◆ 밸브 치수도

### ▶ 1단 롤러레버 베어링

RLV460-1RB

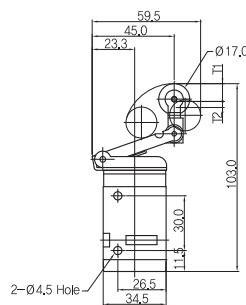
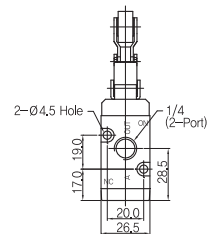


T1	유효 동작 거리	8,0mm
T2	무효 동작 거리	3,0mm
F1	유효 조작에 필요한 하중	2,0kg
F2	무효 조작에 필요한 하중	

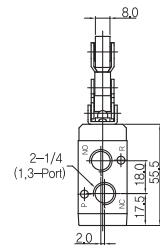


### ▶ 2단 롤러레버 1방향

RLV460-2RP

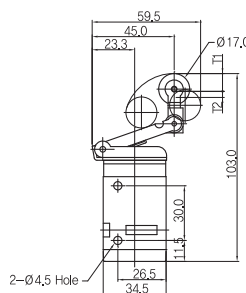
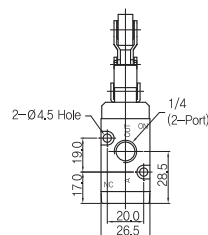


T1	유효 동작 거리	9,0mm
T2	무효 동작 거리	3,5mm
F1	유효 조작에 필요한 하중	2,0kg
F2	무효 조작에 필요한 하중	

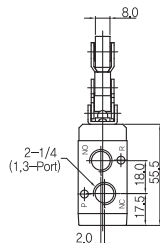


### ▶ 2단 롤러레버 베어링 1방향

RLV460-2RB



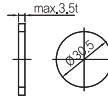
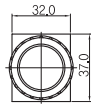
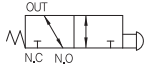
T1	유효 동작 거리	9,0mm
T2	무효 동작 거리	3,5mm
F1	유효 조작에 필요한 하중	2,0kg
F2	무효 조작에 필요한 하중	



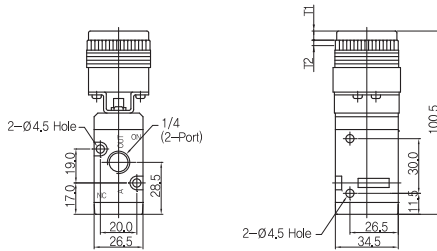
◆ 밸브 치수도

▶ 누름버튼 매립형

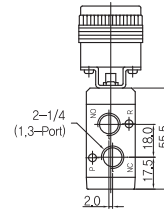
PMEV460-FP-3



Pannel Hole Size

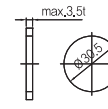
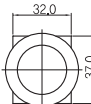
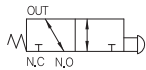


T1	유효 동작 거리	5,5mm
T2	무효 동작 거리	1,0mm
F1	유효 조작에 필요한 하중	3,5kg
F2	무효 조작에 필요한 하중	

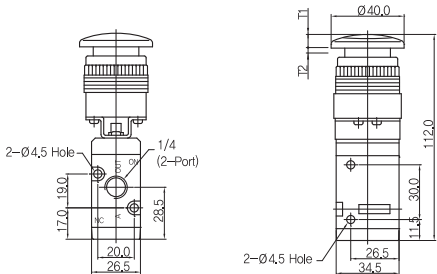


▶ 비상버튼 버섯형

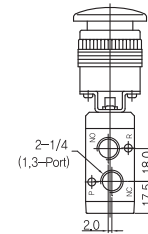
PMEV460-MS-3



Pannel Hole Size

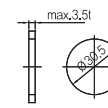
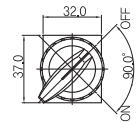


T1	유효 동작 거리	5,5mm
T2	무효 동작 거리	1,0mm
F1	유효 조작에 필요한 하중	3,5kg
F2	무효 조작에 필요한 하중	

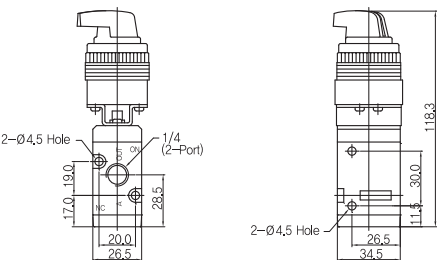


▶ 2위치 셀렉터

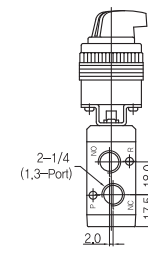
PMEV460-SL-3



Pannel Hole Size



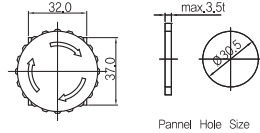
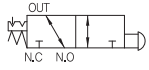
T1	유효 동작 거리	4,0mm
T2	무효 동작 거리	
F1	유효 조작에 필요한 하중	3,5kg
F2	무효 조작에 필요한 하중	



## ◆ 밸브 치수도

### ▶ 비상정지

PMEV460-MT-3



T1	유효 동작 거리	4.0mm
T2	무효 동작 거리	
F1	유효 조작에 필요한 하중	3.5kg
F2	무효 조작에 필요한 하중	

